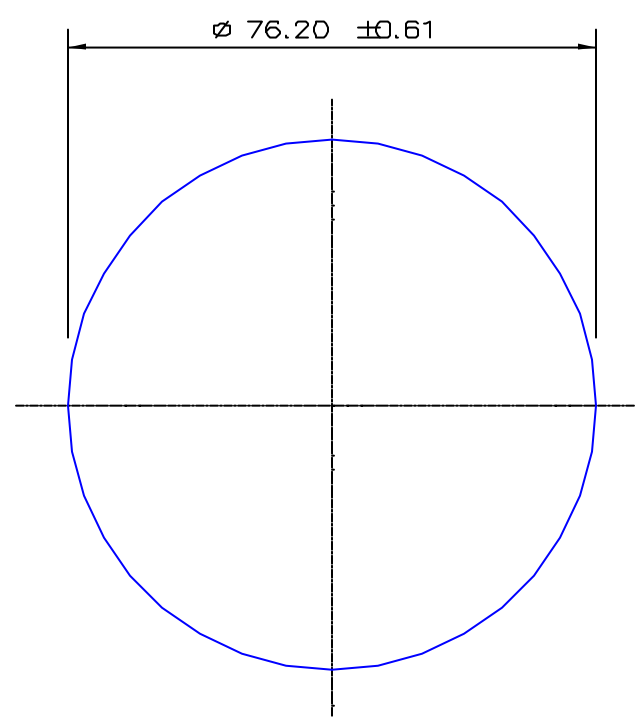


SECTION NO.
960-390



TOTAL SURFACE EXPOSED

SECTION DATA:
 $I_{xx} = 1\ 654\ 969\ \text{mm}^4$
 $I_{yy} = 1\ 654\ 969\ \text{mm}^4$
 $\text{Theta} = 0^\circ$
 $\text{RadG}_x = 19\ \text{mm}$
 $\text{RadG}_y = 19\ \text{mm}$
 $\text{XC}_{\text{right}} = 38.1\ \text{mm}$
 $\text{XC}_{\text{left}} = 38.1\ \text{mm}$
 $\text{YC}_{\text{top}} = 38.1\ \text{mm}$
 $\text{YC}_{\text{bot}} = 38.1\ \text{mm}$
 $\text{Z}_{xx\text{top}} = 43\ 437\ \text{mm}$
 $\text{Z}_{xx\text{bot}} = 43\ 437\ \text{mm}$
 $\text{Z}_{yy\text{right}} = 43\ 437\ \text{mm}$
 $\text{Z}_{yy\text{left}} = 43\ 437\ \text{mm}$

0.40 RADIUS ON ALL OUTSIDE CORNERS
UNLESS OTHERWISE SPECIFIED

EXTRUDED FINISH : STRUCTURAL

			AREA WEIGHT PERIMETER ANOD PERIM PAINT PERIM CIRCLE DIA FACTOR ALLOY TEMPER	4560.4 12.359 239.4 239.4 (0.0) 76 19 6351 T5	SQ MM KG M MM MM MM MM	 G. James Extrusion Co. A.C.N 010 828 234 1082 KINGSFORD SMITH DRIVE, EAGLE FARM, QUEENSLAND, 4009 PO BOX 1376, EAGLE FARM BC, 4009 PHONE : (07) 3877 2833 FAX : (07) 3877 2890	CUSTOMER G. JAMES EXTRUSION Co.		
					CUSTOMER PART NAME DIA 76.20 ROUND SOLID		SCALE 1:1	TOLERANCES IN ACCORDANCE WITH AS 1866-1986 APPLY UNLESS OTHERWISE SPECIFIED	
1	17/12/01	SPG	EXPOSED SURFACE ADDED C/N 4676				DRAWN CLD	CHECK DATE 30/01/97	DWG. NO. 960-390
NO	DATE	DR	REVISION						