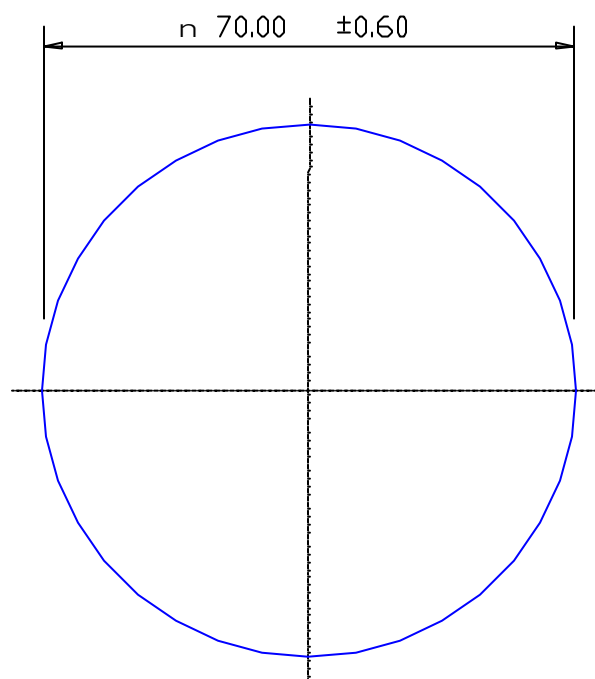


SECTION NO.
960-350



NO EXPOSED SURFACE

SECTION DATA:
 $I_{xx} = 1\,178\,588\text{ mm}^4$
 $I_{yy} = 1\,178\,588\text{ mm}^4$
 $\text{Theta} = 1.0^\circ$
 $\text{RadG}_x = 18\text{ mm}$
 $\text{RadG}_y = 18\text{ mm}$
 $\text{XC}_{\text{Right}} = 35.0\text{ mm}$
 $\text{XC}_{\text{Left}} = 35.0\text{ mm}$
 $\text{YC}_{\text{top}} = 35.0\text{ mm}$
 $\text{YC}_{\text{bot}} = 35.0\text{ mm}$
 $\text{Z}_{xx\text{top}} = 33\,674\text{ mm}^3$
 $\text{Z}_{xx\text{bot}} = 33\,674\text{ mm}^3$
 $\text{Z}_{yy\text{right}} = 33\,674\text{ mm}^3$
 $\text{Z}_{yy\text{left}} = 33\,674\text{ mm}^3$

0.40 RADIUS ON ALL OUTSIDE CORNERS
UNLESS OTHERWISE SPECIFIED

EXTRUDED FINISH + STRUCTURAL

			41637	AREA 3848.5 SQ MM WEIGHT 10.429 KG M PERIMETER 219.9 MM ANOD PERIM 219.9 MM PAINT PERIM 219.9 (0.0) MM C CIRCLE DIA 70 MM FACTOR 21 ALLOY 6061 TEMPER T6	 A.C.N 010 828 234 1082 KINGSFORD SMITH DRIVE, EAGLE FARM, QUEENSLAND, 4009 PO BOX 1376, EAGLE FARM BC, 4009 PHONE : (07) 3877 2833 FAX : (07) 3877 2890	CUSTOMER G. JAMES EXTRUSION Co.			
						CUSTOMER PART NAME NO. 70 mm DIA. SOLID ROUND			
					SCALE 1:1	TOLERANCES IN ACCORDANCE WITH AS 1866-1997 APPLY UNLESS OTHERWISE SPECIFIED			
NO	DATE	DR	REVISION			DRAWN PAD	CHECK	DATE 20/08/03	DWG. NO. 960-350