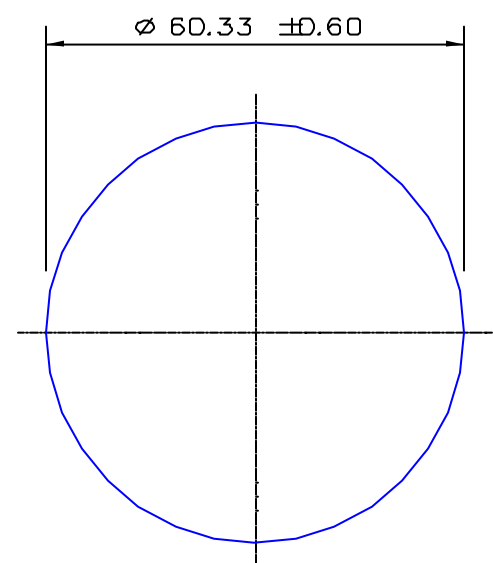


SECTION NO.
960-275



TOTAL SURFACE EXPOSED

SECTION DATA:
 $I_{XX} = 650\,284\text{ mm}^4$
 $I_{YY} = 650\,284\text{ mm}^4$
 $\text{Theta} = 0$
 $\text{RadG}_x = 15\text{ mm}$
 $\text{RadG}_y = 15\text{ mm}$
 $X_{C_{\text{right}}} = 30.2\text{ mm}$
 $X_{C_{\text{left}}} = 30.2\text{ mm}$
 $Y_{C_{\text{top}}} = 30.2\text{ mm}$
 $Y_{C_{\text{bot}}} = 30.2\text{ mm}$
 $Z_{xx_{\text{top}}} = 21\,558\text{ mm}$
 $Z_{xx_{\text{bot}}} = 21\,558\text{ mm}$
 $Z_{yy_{\text{right}}} = 21\,558\text{ mm}$
 $Z_{yy_{\text{left}}} = 21\,558\text{ mm}$

0.40 RADIUS ON ALL OUTSIDE CORNERS
UNLESS OTHERWISE SPECIFIED

EXTRUDED FINISH : STRUCTURAL

			AREA	2858.6	SQ MM	 G. James Extrusion Co. A.C.N 010 828 234 1082 KINGSFORD SMITH DRIVE, EAGLE FARM, QUEENSLAND, 4009 PO BOX 1376, EAGLE FARM BC, 4009 PHONE : (07) 3877 2833 FAX : (07) 3877 2890	CUSTOMER		G. JAMES EXTRUSION Co.	
			WEIGHT	7.747	KG M		CUSTOMER PART NAME		DIA 60.33 SOLID ROUND	
			PERIMETER	189.5	MM		SCALE		1:1	
			ANOD PERIM	189.5	MM		TOLERANCES IN ACCORDANCE WITH AS 1866-1986		APPLY UNLESS OTHERWISE SPECIFIED	
			PAINT PERIM	189.5 (0.0)	MM		DRAWN	CHECK	DATE	DWG. NO.
			CIRCLE DIA	60	MM		SPG		08/08/95	960-275
1	17/12/01	SPG	EXPOSED SURFACE ADDED C/N 4685	FACTOR	24					
NO	DATE	DR	REVISION	ALLOY	6351					
				TEMPER	T5					