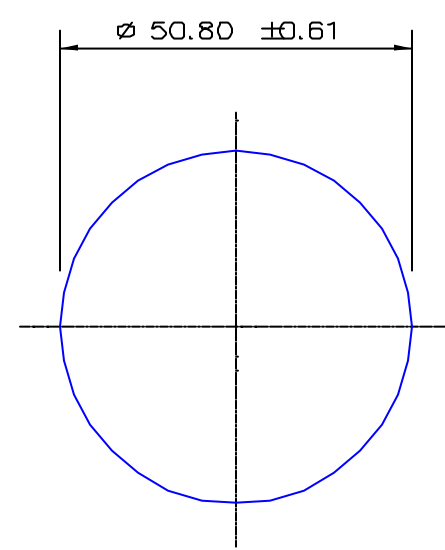


SECTION NO.
960-202



TOTAL SURFACE EXPOSED

SECTION DATA:
 $I_{XX} = 326\,907\text{ mm}^4$
 $I_{YY} = 326\,907\text{ mm}^4$
 $\text{Theta} = 1.0$
 $\text{RadG}_x = 13\text{ mm}$
 $\text{RadG}_y = 13\text{ mm}$
 $X_{\text{Right}} = 25.4\text{ mm}$
 $X_{\text{Left}} = 25.4\text{ mm}$
 $Y_{\text{Top}} = 25.4\text{ mm}$
 $Y_{\text{Bot}} = 25.4\text{ mm}$
 $Z_{xx\text{top}} = 12\,870\text{ mm}$
 $Z_{xx\text{bot}} = 12\,870\text{ mm}$
 $Z_{yy\text{right}} = 12\,870\text{ mm}$
 $Z_{yy\text{left}} = 12\,870\text{ mm}$

0.40 RADIUS ON ALL OUTSIDE CORNERS
UNLESS OTHERWISE SPECIFIED

EXTRUDED FINISH : STRUCTURAL

			AREA	2026.8	SQ MM	 G. James Extrusion Co. A.C.N 010 828 234 1082 KINGSFORD SMITH DRIVE, EAGLE FARM, QUEENSLAND, 4009 PO BOX 1376, EAGLE FARM BC, 4009 PHONE : (07) 3877 2833 FAX : (07) 3877 2890	CUSTOMER		G. JAMES EXTRUSION Co.	
			WEIGHT	5.493	KG M		CUSTOMER PART NAME		NO.	
			PERIMETER	159.6	MM		50.8 mm ROUND ROD			
			ANOD PERIM	159.6	MM		SCALE		TOLERANCES IN ACCORDANCE WITH AS 1866-1986 APPLY UNLESS OTHERWISE SPECIFIED	
			PAINT PERIM	159.6 (0.0)	MM		1:1			
			CIRCLE DIA	51	MM		DRAWN		DATE	
1	17/12/01	PAD	EXPOSED SURFACE ADDED C/N 4684	FACTOR	29	CLD		29/01/97		
NO	DATE	DR	REVISION	ALLOY	6351			DWG. NO.		
				TEMPER	T5			960-202		