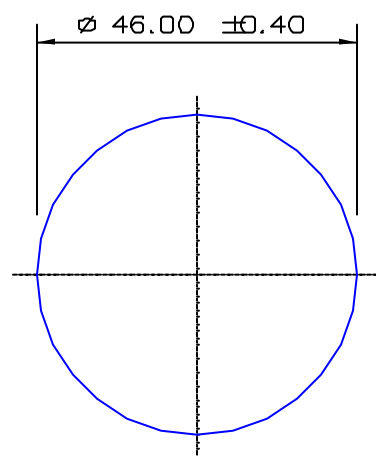


SECTION NO.  
960-183



NO EXPOSED SURFACE

SECTION DATA:  
 $I_{xx} = 219\,787 \text{ mm}^4$   
 $I_{yy} = 219\,787 \text{ mm}^4$   
 $\text{Theta} = 0.$   
 $\text{RadG}_x = 12. \text{ mm}$   
 $\text{RadG}_y = 12. \text{ mm}$   
 $X_{\text{Right}} = 23.0 \text{ mm}$   
 $X_{\text{Left}} = 23.0 \text{ mm}$   
 $Y_{\text{Top}} = 23.0 \text{ mm}$   
 $Y_{\text{Bot}} = 23.0 \text{ mm}$   
 $Z_{x\text{top}} = 9\,556 \text{ mm}$   
 $Z_{x\text{bot}} = 9\,556 \text{ mm}$   
 $Z_{y\text{right}} = 9\,556 \text{ mm}$   
 $Z_{y\text{left}} = 9\,556 \text{ mm}$

0.40 RADIUS ON ALL OUTSIDE CORNERS  
UNLESS OTHERWISE SPECIFIED

EXTRUDED FINISH : STRUCTURAL

				AREA	1661.9	SQ MM	 <p>G. James Extrusion Co.</p> <p>A.C.N 010 828 234          1082 KINGSFORD SMITH DRIVE, EAGLE FARM, QUEENSLAND, 4009          PO BOX 1376, EAGLE FARM BC, 4009          PHONE : (07) 3877 2833 FAX : (07) 3877 2890</p>	CUSTOMER		G. JAMES EXTRUSION Co.		
				WEIGHT	4.504	KG M		CUSTOMER PART NAME		DIA 46.0 ROUND SOLID		
				PERIMETER	144.5	MM		SCALE		1:1		
				ANOD PERIM	144.5	MM		TOLERANCES IN ACCORDANCE WITH AS 1866-1986 APPLY UNLESS OTHERWISE SPECIFIED		DATE		30/11/01
				PAINT PERIM	144.5 (0.0)	MM				DRAWN		SPG
				CIRCLE DIA	46.	MM		DWG. NO.		960-183		
				FACTOR	32.							
				ALLOY	6351							
				TEMPER	T6							
NO	DATE	DR	REVISION									