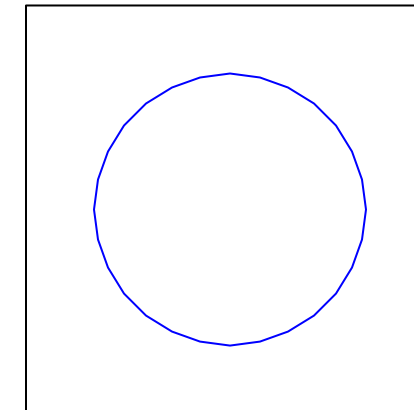
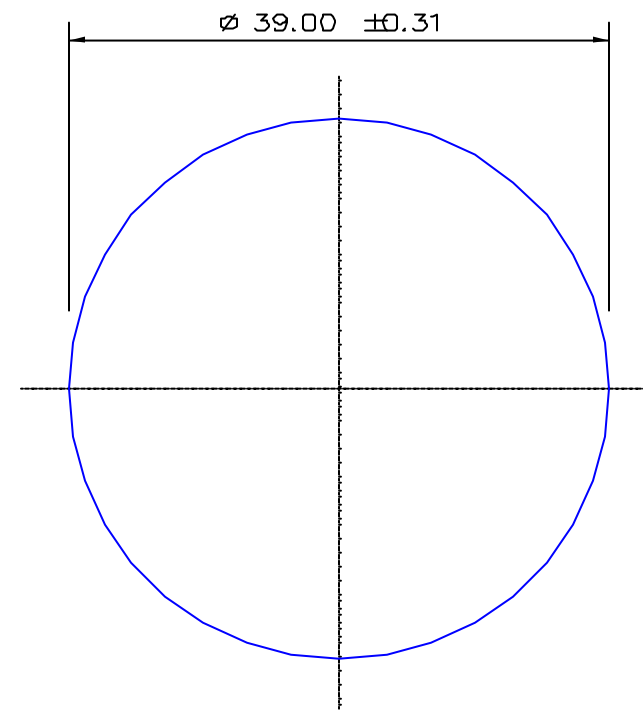


SECTION NO.
960-157



EXPOSED SURFACE
ACTUAL SIZE

SECTION DATA:
 $I_{xx} = 113\,561\text{ mm}^4$
 $I_{yy} = 113\,561\text{ mm}^4$
 $\text{Theta} = 1.0$
 $\text{RadG}_x = 10\text{ mm}$
 $\text{RadG}_y = 10\text{ mm}$
 $X_{\text{Right}} = 19.5\text{ mm}$
 $X_{\text{Left}} = 19.5\text{ mm}$
 $Y_{\text{Top}} = 19.5\text{ mm}$
 $Y_{\text{Bot}} = 19.5\text{ mm}$
 $Z_{xx\text{top}} = 5\,824\text{ mm}$
 $Z_{xx\text{bot}} = 5\,824\text{ mm}$
 $Z_{yy\text{right}} = 5\,824\text{ mm}$
 $Z_{yy\text{left}} = 5\,824\text{ mm}$

0.40 RADIUS ON ALL OUTSIDE CORNERS
UNLESS OTHERWISE SPECIFIED

EXTRUDED FINISH : STRUCTURAL

			AREA	1194.6	SQ MM	 G. James Extrusion Co. A.C.N 010 828 234 1082 KINGSFORD SMITH DRIVE, EAGLE FARM, QUEENSLAND, 4009 PO BOX 1376, EAGLE FARM BC, 4009 PHONE : (07) 3877 2833 FAX : (07) 3877 2890	CUSTOMER		G. JAMES EXTRUSION Co.	
			WEIGHT	3.237	KG M		CUSTOMER PART NAME		NO.	
			PERIMETER	122.5	MM		39.0 DIA ROUND SOLID			
			ANOD PERIM	122.5	MM		SCALE		TOLERANCES IN ACCORDANCE WITH AS 1866-1986 APPLY UNLESS OTHERWISE SPECIFIED	
			PAINT PERIM	122.5 (0.0)	MM		2:1			
			CIRCLE DIA	39	MM					
1	17/12/01	SPG	EXPOSED SURFACE ADDED C/N 4679				DRAWN	CHECK	DATE	DWG. NO.
NO	DATE	DR	REVISION				SPG		24/02/97	960-157