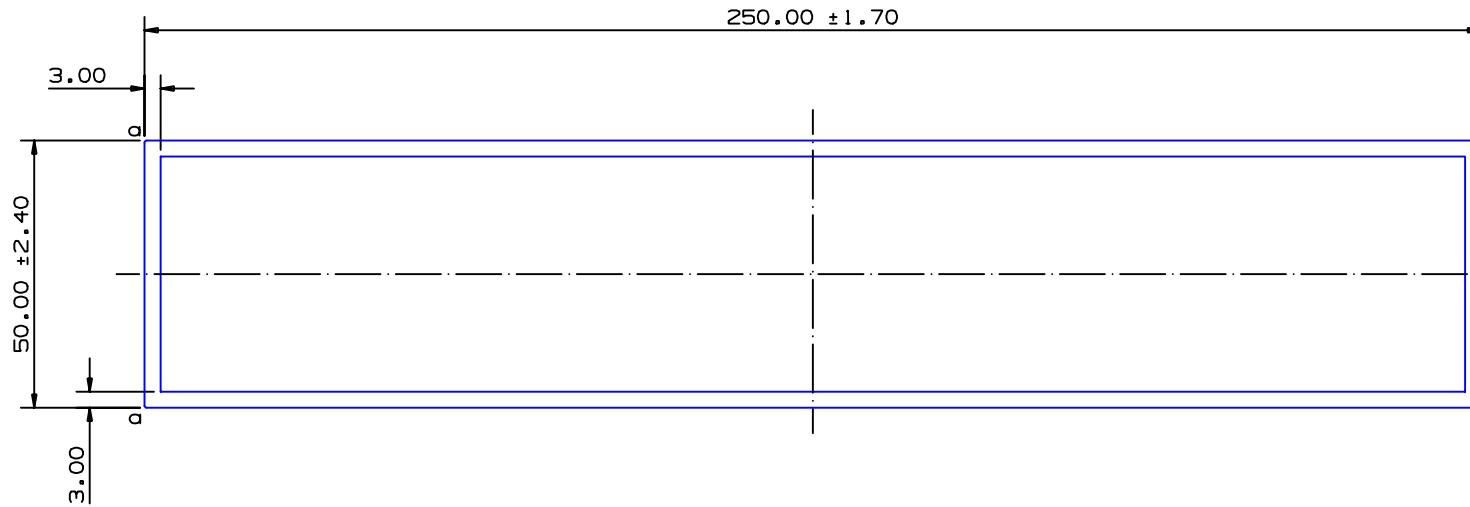


SECTION NO.
940-300



TOTAL SURFACE EXPOSED

SECTION DATA:

$I_{xx} = 872\,007\text{ mm}^4$
 $I_{yy} = 11\,837\,149\text{ mm}^4$
 $\text{Theta} = 1.0^\circ$
 $\text{RadG}_x = 22\text{ mm}$
 $\text{RadG}_y = 82\text{ mm}$
 $\text{XC}_{\text{Right}} = 125.00\text{ mm}$
 $\text{XC}_{\text{Left}} = 125.00\text{ mm}$
 $\text{YC}_{\text{top}} = 25.00\text{ mm}$
 $\text{YC}_{\text{bot}} = 25.00\text{ mm}$
 $\text{Z}_{xx\text{top}} = 34\,880\text{ mm}^3$
 $\text{Z}_{xx\text{bot}} = 34\,880\text{ mm}^3$
 $\text{Z}_{yy\text{right}} = 94\,697\text{ mm}^3$
 $\text{Z}_{yy\text{left}} = 94\,697\text{ mm}^3$

$a = 0.40$ radius

3.00±0.30 TYP WALL THICKNESS
UNLESS OTHERWISE SPECIFIED

0.40 RADIUS ON ALL OUTSIDE CORNERS
UNLESS OTHERWISE SPECIFIED

EXTRUDED FINISH : ARCHITECTURAL

		A 49751		AREA 1763.9 SQ MM WEIGHT 4.780 KG M PERIMETER 1175.3 MM ANOD PERIM 599.3 MM PAINT PERIM 599.3 (0.0) MM C CIRCLE DIA 255 MM FACTOR 246 ALLOY 6060 TEMPER T5	 © COPYRIGHT 2004 THIS DRAWING IS THE PROPERTY OF G. JAMES EXTRUSION CO. PTY LTD ALL RIGHTS RESERVED A.C.N 010 828 234 1082 KINGSFORD SMITH DRIVE, EAGLE FARM, QUEENSLAND, 4009 PO BOX 1376, EAGLE FARM BC, 4009 PHONE : (07) 3877 2833 FAX : (07) 3877 2890	CUSTOMER G. JAMES EXTRUSION Co.	
				CUSTOMER PART NAME NO. 250 x 50 x 3 RECT. BOX			
				SCALE 1:1	TOLERANCES IN ACCORDANCE WITH AS/NZS 1866:1997 APPLY UNLESS OTHERWISE SPECIFIED		
1	19/10/06	SP6	CUSTOMER APRT NAME MODIFIED	DRAWN PAD	CHECK	DATE 11/10/06	DWG. NO. 940-300
NO	DATE	DR	REVISION				