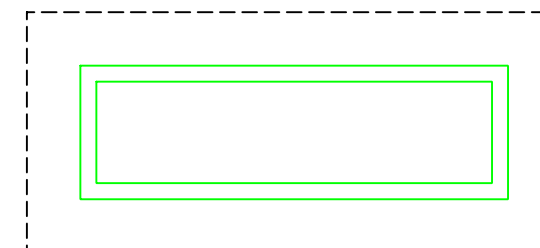
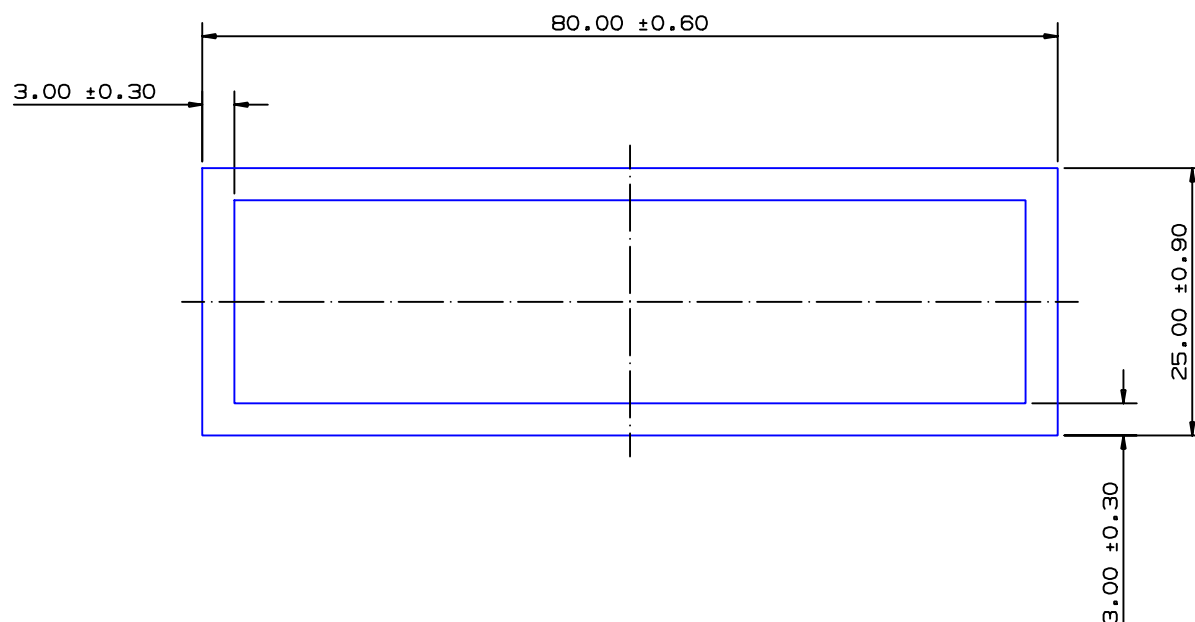


SECTION NO.

940-080

EXPOSED SURFACE
ACTUAL SIZE

SECTION DATA:

$I_{xx} = 61\,870\text{ mm}^4$
 $I_{yy} = 425\,062\text{ mm}^4$
 $\text{Theta} = 1.0^\circ$
 $\text{RadG}_x = 10\text{ mm}$
 $\text{RadG}_y = 27\text{ mm}$
 $\text{XC}_{\text{Right}} = 40.0\text{ mm}$
 $\text{XC}_{\text{Left}} = 40.0\text{ mm}$
 $\text{YC}_{\text{top}} = 12.5\text{ mm}$
 $\text{YC}_{\text{bot}} = 12.5\text{ mm}$
 $Z_{\text{xx}}^{\text{top}} = 4\,950\text{ mm}^3$
 $Z_{\text{xx}}^{\text{bot}} = 4\,950\text{ mm}^3$
 $Z_{\text{yy}}^{\text{right}} = 10\,627\text{ mm}^3$
 $Z_{\text{yy}}^{\text{left}} = 10\,627\text{ mm}^3$

0.40 RADIUS ON ALL OUTSIDE CORNERS
UNLESS OTHERWISE SPECIFIED

EXTRUDED FINISH : ARCHITECTURAL

A

AREA	594.0	SQ MM
WEIGHT	1.610	KG M
PERIMETER	396.0	MM
ANOD PERIM	210.0	MM
PAINT PERIM	210.0 (0.0)	MM
C CIRCLE DIA	84	MM
FACTOR	246	
ALLOY	6351	
TEMPER	T5	


**G. James
Extrusion Co.**

A.C.N 010 828 234
 1082 KINGSFORD SMITH DRIVE, EAGLE FARM, QUEENSLAND, 4009
 PO BOX 1376, EAGLE FARM BC, 4009
 PHONE : (07) 3877 2833 FAX : (07) 3877 2890

© COPYRIGHT 2004
 THIS DRAWING IS THE PROPERTY OF
 G. JAMES EXTRUSION CO. PTY LTD
 ALL RIGHTS RESERVED

CUSTOMER

G. JAMES EXTRUSION Co.

CUSTOMER PART NAME

NO.

80.0 x 25.0 x 3.0 RECT. BOX

SCALE

2:1

TOLERANCES IN ACCORDANCE WITH AS/NZS 1866:1997
APPLY UNLESS OTHERWISE SPECIFIED

DRAWN

BJC

CHECK

DATE

13/10/87

DWG. NO.

940-080

1	04/01/10	PAD	ALLOY AND TEMPER 6351 T5 WERE 6063 T6 C/N 8395
---	----------	-----	--

NO	DATE	DR	REVISION
----	------	----	----------