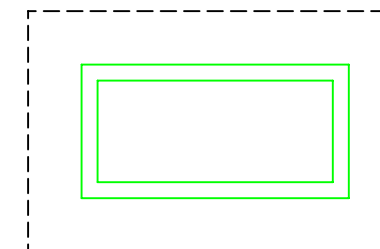
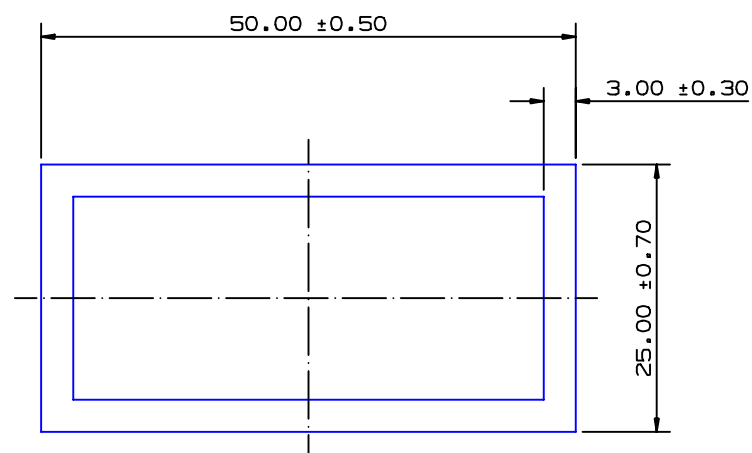


SECTION NO.

940-075

EXPOSED SURFACE
ACTUAL SIZE

SECTION DATA:

$I_{xx} = 39\,955\text{ mm}^4$
 $I_{yy} = 125\,542\text{ mm}^4$
 $\text{Theta} = 1.0^\circ$
 $\text{RadG}_x = 10\text{ mm}$
 $\text{RadG}_y = 17\text{ mm}$
 $\text{XC}_{\text{Right}} = 25.0\text{ mm}$
 $\text{XC}_{\text{Left}} = 25.0\text{ mm}$
 $\text{YC}_{\text{top}} = 12.5\text{ mm}$
 $\text{YC}_{\text{bot}} = 12.5\text{ mm}$
 $Z_{xx}^{\text{top}} = 3\,196\text{ mm}^3$
 $Z_{xx}^{\text{bot}} = 3\,196\text{ mm}^3$
 $Z_{yy}^{\text{right}} = 5\,022\text{ mm}^3$
 $Z_{yy}^{\text{left}} = 5\,022\text{ mm}^3$

3.00±0.30 TYP WALL THICKNESS
UNLESS OTHERWISE SPECIFIED

0.40 RADIUS ON ALL OUTSIDE CORNERS
UNLESS OTHERWISE SPECIFIED

EXTRUDED FINISH : ARCHITECTURAL

A

AREA	414.0	SQ MM
WEIGHT	1.122	KG M
PERIMETER	276.0	MM
ANOD PERIM	150.0	MM
PAINT PERIM	150.0 (0.0)	MM
C CIRCLE DIA	56	MM
FACTOR	246	
ALLOY	6063	
TEMPER	T6	


**G. James
Extrusion Co.**

A.C.N 010 828 234
 1082 KINGSFORD SMITH DRIVE, EAGLE FARM, QUEENSLAND, 4009
 PO BOX 1376, EAGLE FARM BC, 4009
 PHONE : (07) 3877 2833 FAX : (07) 3877 2890

© COPYRIGHT 2004
 THIS DRAWING IS THE PROPERTY OF
 G.JAMES EXTRUSION CO. PTY LTD
 ALL RIGHTS RESERVED

CUSTOMER

G. JAMES EXTRUSION Co.

CUSTOMER PART NAME

NO.

50 x 25 x 3 RECT. BOX

SCALE

2:1

TOLERANCES IN ACCORDANCE WITH AS/NZS 1866:1997
 APPLY UNLESS OTHERWISE SPECIFIED

DRAWN

A.T.

CHECK

DATE

03/02/98

DWG. NO.

940-075

2	01/05/12	SP6	REVERT TO REVISION 0 C/N 9233 ISS 2
1	11/04/12	SP6	'DNV' NOTE ADDED C/N 9233

NO	DATE	DR	REVISION
----	------	----	----------