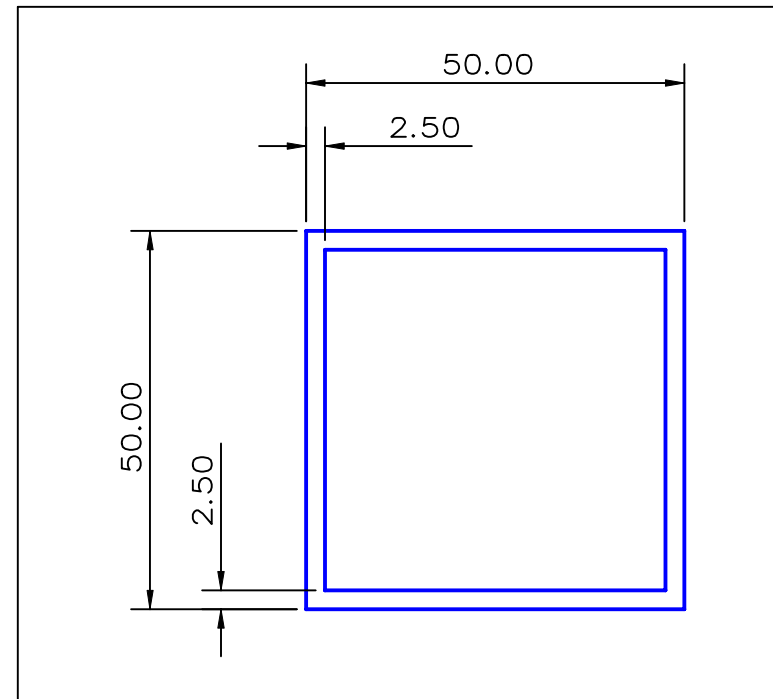


SECTION NO.

930-082



TOTAL SURFACE EXPOSED

SECTION DATA:

 $I_{xx} = 179\,115 \text{ mm}^4$  $I_{yy} = 179\,115 \text{ mm}^4$ Theta =  $1.0^0$ RadG<sub>x</sub> = 19. mmRadG<sub>y</sub> = 19. mmX<sub>Qleft</sub> = 25.0 mmX<sub>Qright</sub> = 25.0 mmY<sub>Qtop</sub> = 25.0 mmY<sub>Qbot</sub> = 25.0 mmZ<sub>xxtop</sub> = 7 165 mm<sup>3</sup>Z<sub>xxbot</sub> = 7 165 mm<sup>3</sup>Z<sub>yyleft</sub> = 7 165 mm<sup>3</sup>Z<sub>yyright</sub> = 7 165 mm<sup>3</sup>0.40 RADIUS ON ALL OUTSIDE CORNERS  
UNLESS OTHERWISE SPECIFIED

EXTRUDED FINISH : ARCHITECTURAL

NO	DATE	DR	REVISION	AREA	475.0	SQ MM	WEIGHT	1.287	KG M	PERIMETER	380.0	MM	ANOD PERIM	200.0	MM	PAINT PERIM	200.0	MM	C CIRCLE DIA	71.	MM	FACTOR	295.						
				ALLOY	6063		TEMPER	T6																					
A				G. James Extrusion Co.		CUSTOMER		G. JAMES EXTRUSION Co.		CUSTOMER PART NAME		NO.		50 x 2.5 SQUARE BOX		SCALE		TOLERANCES IN ACCORDANCE WITH AS 1866-1986		APPLY UNLESS OTHERWISE SPECIFIED		DRAWN		CHECK		DATE		DWG. NO.	
				A.C.N 010 828 234		1082 KINGSFORD SMITH DRIVE, EAGLE FARM, QUEENSLAND, 4009		1:1		25/02/93		A.T		930-082		PHONE : (07) 3877 2833		FAX : (07) 3877 2890											