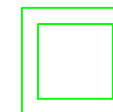
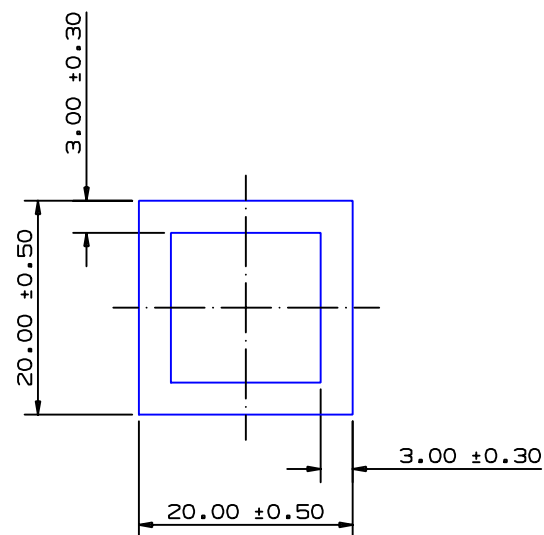


SECTION NO.

930-020

TOTAL SURFACE EXPOSED
ACTUAL SIZE

SECTION DATA:

$I_{xx} = 10\,132 \text{ mm}^4$
 $I_{yy} = 10\,132 \text{ mm}^4$
 $\text{Theta} = 1.0^\circ$
 $\text{RadG}_x = 7. \text{ mm}$
 $\text{RadG}_y = 7. \text{ mm}$
 $\text{XC}_{\text{Left}} = 10.0 \text{ mm}$
 $\text{XC}_{\text{Right}} = 10.0 \text{ mm}$
 $\text{YC}_{\text{Top}} = 10.0 \text{ mm}$
 $\text{YC}_{\text{Bot}} = 10.0 \text{ mm}$
 $Z_{\text{xx}}^{\text{top}} = 1\,013 \text{ mm}^3$
 $Z_{\text{xx}}^{\text{bot}} = 1\,013 \text{ mm}^3$
 $Z_{\text{yy}}^{\text{left}} = 1\,013 \text{ mm}^3$
 $Z_{\text{yy}}^{\text{right}} = 1\,013 \text{ mm}^3$

0.40 RADIUS ON ALL OUTSIDE CORNERS
UNLESS OTHERWISE SPECIFIED

EXTRUDED FINISH : ARCHITECTURAL

A

AREA	204.0	SQ MM
WEIGHT	0.553	KG M
PERIMETER	136.0	MM
ANOD PERIM	80.0	MM
PAINT PERIM	100.0	MM
C CIRCLE DIA	28.	MM
FACTOR	246.	
ALLOY	6063	
TEMPER	T6	


**G. James
Extrusion Co.**

A.C.N 010 828 234
 1082 KINGSFORD SMITH DRIVE, EAGLE FARM, QUEENSLAND, 4009
 PO BOX 1376, EAGLE FARM BC, 4009
 PHONE : (07) 3877 2833 FAX : (07) 3877 2890

© COPYRIGHT 2004
 THIS DRAWING IS THE PROPERTY OF
 G. JAMES EXTRUSION CO. PTY LTD
 ALL RIGHTS RESERVED

CUSTOMER

G. JAMES EXTRUSION Co.

CUSTOMER PART NAME

NO.

20 x 3.0 SQUARE BOX

SCALE

2:1

TOLERANCES IN ACCORDANCE WITH AS/NZS 1866:1997
 APPLY UNLESS OTHERWISE SPECIFIED

DRAWN

A.T

CHECK

DATE

06/03/87

DWG. NO.

930-020

NO	DATE	DR	REVISION