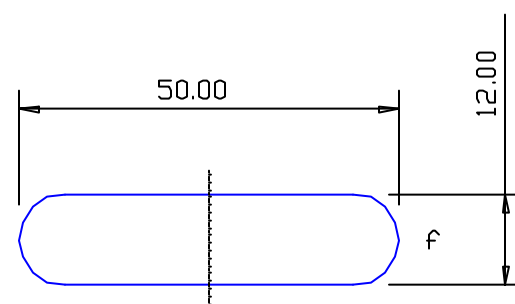


SECTION NO.  
921-100



NO EXPOSED SURFACE

SECTION DATA:

$I_{xx} = 6\,490 \text{ mm}^4$

$I_{yy} = 107\,662 \text{ mm}^4$

Theta =  $1.0^\circ$

RadG<sub>x</sub> = 3. mm

RadG<sub>y</sub> = 14. mm

XC<sub>Right</sub> = 25.00 mm

XC<sub>Left</sub> = 25.00 mm

YC<sub>top</sub> = 6.00 mm

YC<sub>bot</sub> = 6.00 mm

Z<sub>xx</sub>top = 1 082 mm<sup>3</sup>

Z<sub>xx</sub>bot = 1 082 mm<sup>3</sup>

Z<sub>yy</sub>right = 4 306 mm<sup>3</sup>

Z<sub>yy</sub>left = 4 306 mm<sup>3</sup>

f = full radius

0.40 RADIUS ON ALL OUTSIDE CORNERS  
UNLESS OTHERWISE SPECIFIED

EXTRUDED FINISH : ARCHITECTURAL

		AREA 569.1 SQ MM WEIGHT 1.542 KG M PERIMETER 113.7 MM ANOD PERIM 113.7 MM PAINT PERIM 113.7 (0.0) MM C CIRCLE DIA 50. MM FACTOR 74. ALLOY 6063 TEMPER T6		 A.C.N 010 828 234 1082 KINGSFORD SMITH DRIVE, EAGLE FARM, QUEENSLAND, 4009 PO BOX 1376, EAGLE FARM BC, 4009 PHONE : (07) 3877 2833 FAX : (07) 3877 2890		CUSTOMER G. JAMES EXTRUSION Co.		
						CUSTOMER PART NAME NO. 50 x 12 FLAT BAR RAD-CNRS		
				SCALE 1:1		TOLERANCES IN ACCORDANCE WITH AS 1866-1986 APPLY UNLESS OTHERWISE SPECIFIED		
NO	DATE	DR	REVISION	DRAWN BJC		CHECK	DATE 26/08/88	DWG. NO. 921-100