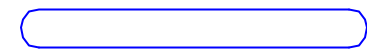
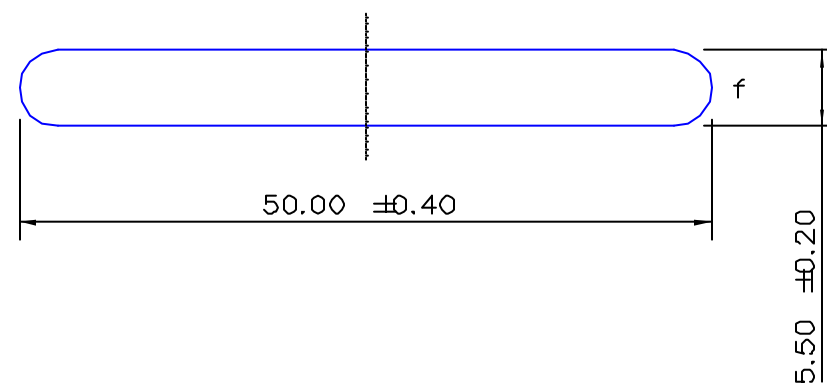


SECTION NO.
921-070



ACTUAL SIZE
TOTAL SURFACE EXPOSED



SECTION DATA:
 $I_{xx} = 662 \text{ mm}^4$
 $I_{yy} = 53\,430 \text{ mm}^4$
 $\text{Theta} = 1.0$
 $\text{RadG}_x = 2 \text{ mm}$
 $\text{RadG}_y = 14 \text{ mm}$
 $X_{\text{Right}} = 25.00 \text{ mm}$
 $X_{\text{Left}} = 25.00 \text{ mm}$
 $Y_{\text{Top}} = 2.75 \text{ mm}$
 $Y_{\text{Bot}} = 2.75 \text{ mm}$
 $Z_{xx\text{top}} = 241 \text{ mm}$
 $Z_{xx\text{bot}} = 241 \text{ mm}$
 $Z_{yy\text{right}} = 2\,137 \text{ mm}$
 $Z_{yy\text{left}} = 2\,137 \text{ mm}$

f = full radius

0.40 RADIUS ON ALL OUTSIDE CORNERS
UNLESS OTHERWISE SPECIFIED

EXTRUDED FINISH : ARCHITECTURAL

			AREA	268.5	SQ MM	 <p>G. James Extrusion Co.</p> <p>A.C.N 010 828 234 1082 KINGSFORD SMITH DRIVE, EAGLE FARM, QUEENSLAND, 4009 PO BOX 1376, EAGLE FARM BC, 4009 PHONE : (07) 3877 2833 FAX : (07) 3877 2890</p>	CUSTOMER		G. JAMES EXTRUSION Co.	
			WEIGHT	0.728	KG M		CUSTOMER PART NAME		NO.	
			PERIMETER	106.3	MM		50 x 5.5 FLAT BAR RAD-CNRS			
			ANOD PERIM	106.3	MM		SCALE		TOLERANCES IN ACCORDANCE WITH AS 1866-1986 APPLY UNLESS OTHERWISE SPECIFIED	
			PAINT PERIM	106.3 (0.0)	MM		2:1			
			CIRCLE DIA	50	MM		DRAWN		CHECK	
			FACTOR	146			A.T		DATE	
			ALLOY	6063					06/03/87	
			TEMPER	T5					DWG. NO.	
									921-070	
1	17/12/01	SPG	EXPOSED SURFACE ADDED C/N 4675							
NO	DATE	DR	REVISION							