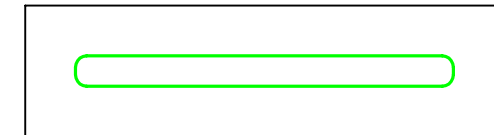
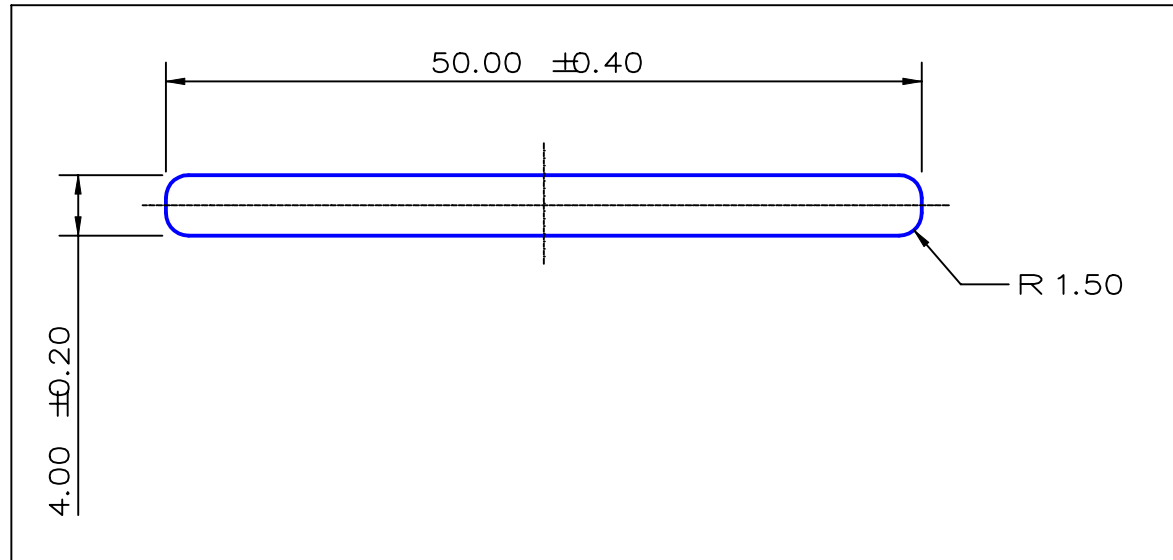


SECTION NO.
921-062



ACTUAL SIZE
TOTAL SURFACE EXPOSED

SECTION DATA:
 $I_{xx} = 261 \text{ mm}^4$
 $I_{yy} = 40\,492 \text{ mm}^4$
 $\text{Theta} = 1.0$
 $\text{RadG}_x = 1. \text{ mm}$
 $\text{RadG}_y = 14. \text{ mm}$
 $\text{XC}_{\text{Right}} = 25.0 \text{ mm}$
 $\text{XC}_{\text{Left}} = 25.0 \text{ mm}$
 $\text{YC}_{\text{top}} = 2.0 \text{ mm}$
 $\text{YC}_{\text{bot}} = 2.0 \text{ mm}$
 $Z_{xx\text{top}} = 131 \text{ mm}^3$
 $Z_{xx\text{bot}} = 131 \text{ mm}^3$
 $Z_{yy\text{right}} = 1\,620 \text{ mm}^3$
 $Z_{yy\text{left}} = 1\,620 \text{ mm}^3$

0.40 RADIUS ON ALL OUTSIDE CORNERS
UNLESS OTHERWISE SPECIFIED

EXTRUDED FINISH : ARCHITECTURAL

				AREA	198.1	SQ MM
				WEIGHT	0.537	KG M
				PERIMETER	105.4	MM
				ANOD PERIM	105.4	MM
				PAINT PERIM	105.4 (0.0)	MM
				C CIRCLE DIA	50.	MM
				FACTOR	196.	
				ALLOY	6063	
				TEMPER	T5	
NO	DATE	DR	REVISION			



A.C.N 010 828 234
 1082 KINGSFORD SMITH DRIVE, EAGLE FARM, QUEENSLAND, 4009
 PO BOX 1376, EAGLE FARM BC, 4009
 PHONE : (07) 3877 2833 FAX : (07) 3877 2890

CUSTOMER			
G. JAMES EXTRUSION Co.			
CUSTOMER PART NAME		NO.	
50 x 4.0 FLAT BAR - RAD CNRS			
SCALE		TOLERANCES IN ACCORDANCE WITH AS 1866-1986 APPLY UNLESS OTHERWISE SPECIFIED	
2:1			
DRAWN	CHECK	DATE	DWG. NO.
SPG		29/08/00	921-062