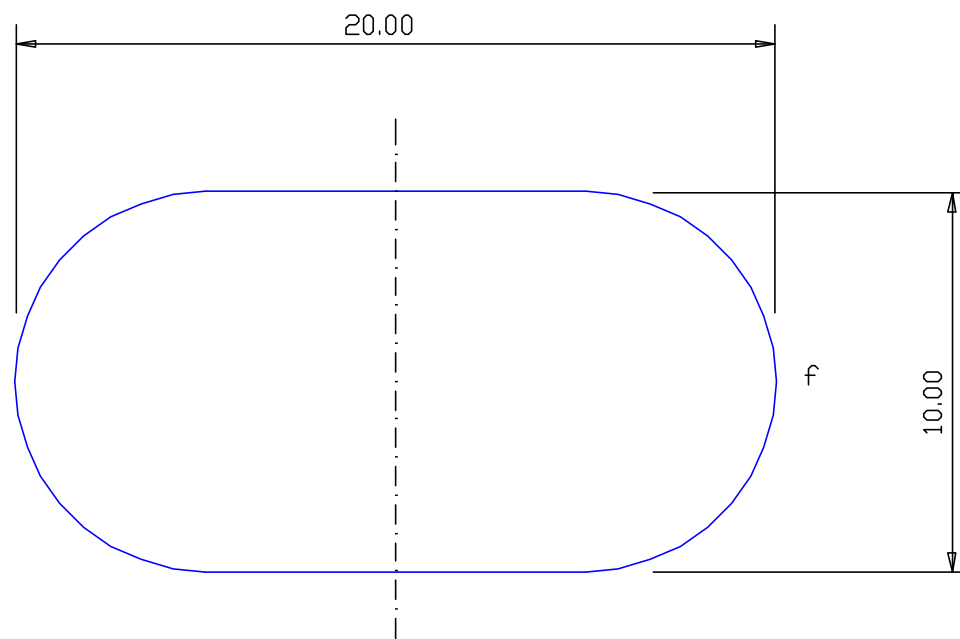


SECTION NO.  
921-020



ACTUAL SIZE  
NO EXPOSED SURFACE

SECTION DATA:  
 $I_{xx} = 1\,324 \text{ mm}^4$   
 $I_{yy} = 4\,954 \text{ mm}^4$   
 $\text{Theta} = 1.0^\circ$   
 $\text{RadG}_x = 3. \text{ mm}$   
 $\text{RadG}_y = 5. \text{ mm}$   
 $\text{XC}_{\text{Right}} = 10.00 \text{ mm}$   
 $\text{XC}_{\text{Left}} = 10.00 \text{ mm}$   
 $\text{YC}_{\text{top}} = 5.00 \text{ mm}$   
 $\text{YC}_{\text{bot}} = 5.00 \text{ mm}$   
 $\text{Z}_{xx\text{top}} = 265 \text{ mm}^3$   
 $\text{Z}_{xx\text{bot}} = 265 \text{ mm}^3$   
 $\text{Z}_{yy\text{right}} = 495 \text{ mm}^3$   
 $\text{Z}_{yy\text{left}} = 495 \text{ mm}^3$

f = full radius

0.40 RADIUS ON ALL OUTSIDE CORNERS  
UNLESS OTHERWISE SPECIFIED

EXTRUDED FINISH : ARCHITECTURAL

AREA	178.5	SQ MM
WEIGHT	0.484	KG M
PERIMETER	51.4	MM
ANOD PERIM	51.4	MM
PAINT PERIM	100.0	MM
C CIRCLE DIA	20.	MM
FACTOR	106.	
ALLOY	6063	
TEMPER	T5	



A.C.N 010 828 234  
 1082 KINGSFORD SMITH DRIVE, EAGLE FARM, QUEENSLAND, 4009  
 PO BOX 1376, EAGLE FARM BC, 4009  
 PHONE : (07) 3877 2833 FAX : (07) 3877 2890

CUSTOMER G.JAMES EXTRUSION Co.			
CUSTOMER PART NAME NO. 20 x 10 FLAT BAR RAD-CNRS			
SCALE 5:1		TOLERANCES IN ACCORDANCE WITH AS 1866-1986 APPLY UNLESS OTHERWISE SPECIFIED	
DRAWN A.T	CHECK	DATE 01/06/88	DWG. NO. 921-020

NO	DATE	DR	REVISION