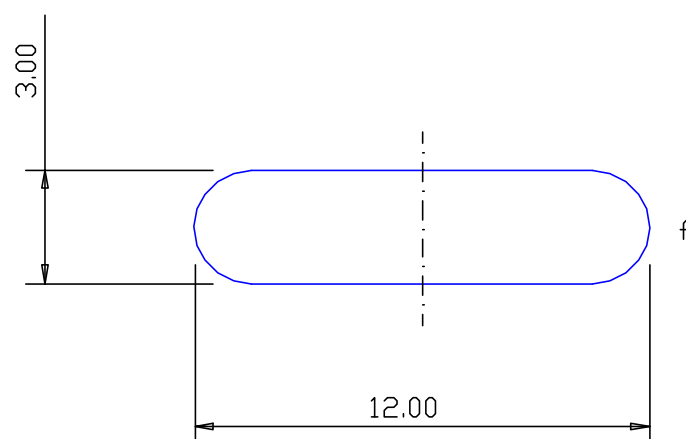


SECTION NO.
921-010



ACTUAL SIZE
NO EXPOSED SURFACE



SECTION DATA:
 $I_{xx} = 24 \text{ mm}^4$
 $I_{yy} = 370 \text{ mm}^4$
 $\text{Theta} = 1.0^\circ$
 $\text{RadG}_x = 1. \text{ mm}$
 $\text{RadG}_y = 3. \text{ mm}$
 $\text{XC}_{\text{Right}} = 6.00 \text{ mm}$
 $\text{XC}_{\text{Left}} = 6.00 \text{ mm}$
 $\text{YC}_{\text{top}} = 1.50 \text{ mm}$
 $\text{YC}_{\text{bot}} = 1.50 \text{ mm}$
 $Z_{xx\text{top}} = 16 \text{ mm}^3$
 $Z_{xx\text{bot}} = 16 \text{ mm}^3$
 $Z_{yy\text{right}} = 62 \text{ mm}^3$
 $Z_{yy\text{left}} = 62 \text{ mm}^3$

f = full radius

0.40 RADIUS ON ALL OUTSIDE CORNERS
UNLESS OTHERWISE SPECIFIED

EXTRUDED FINISH : ARCHITECTURAL

				AREA 34.1 SQ MM WEIGHT 0.092 KG M PERIMETER 27.4 MM ANOD PERIM 27.4 MM PAINT PERIM 00.0 (0.0) MM C CIRCLE DIA 2. MM FACTOR 297. ALLOY 6063 TEMPER T5	 A.C.N 010 828 234 1082 KINGSFORD SMITH DRIVE, EAGLE FARM, QUEENSLAND, 4009 PO BOX 1376, EAGLE FARM BC, 4009 PHONE : (07) 3877 2833 FAX : (07) 3877 2890	CUSTOMER G.JAMES EXTRUSION Co.	
				CUSTOMER PART NAME NO. 12 x 3 FLAT BAR RAD-CNRS			
				SCALE 5:1	TOLERANCES IN ACCORDANCE WITH AS 1866-1986 APPLY UNLESS OTHERWISE SPECIFIED		
NO	DATE	DR	REVISION	DRAWN A.T	CHECK	DATE 06/03/87	DWG. NO. 921-010