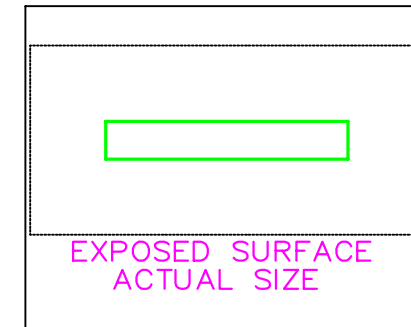
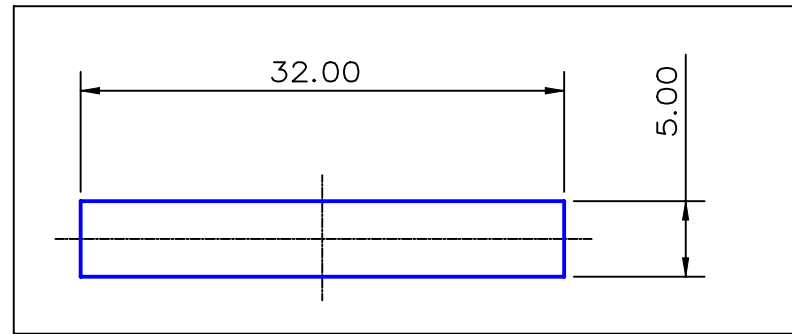


SECTION NO.
920-057



SECTION DATA:
 $I_{xx} = 333 \text{ mm}^4$
 $I_{yy} = 13\,653 \text{ mm}^4$
 $\text{Theta} = 1.0^\circ$
 $\text{RadG}_x = 1. \text{ mm}$
 $\text{RadG}_y = 9. \text{ mm}$
 $X_{\text{Left}} = 16.0 \text{ mm}$
 $X_{\text{Right}} = 16.0 \text{ mm}$
 $Y_{\text{Top}} = 2.5 \text{ mm}$
 $Y_{\text{Bot}} = 2.5 \text{ mm}$
 $Z_{xx\text{top}} = 133 \text{ mm}^3$
 $Z_{xx\text{bot}} = 133 \text{ mm}^3$
 $Z_{yy\text{left}} = 853 \text{ mm}^3$
 $Z_{yy\text{right}} = 21 \text{ mm}^3$

0.40 RADIUS ON ALL OUTSIDE CORNERS
UNLESS OTHERWISE SPECIFIED

EXTRUDED FINISH : ARCHITECTURAL

1	25/03/88	BJC	SECTION WAS 920-215	AREA	160.0	SQ MM	 <p>G. James Extrusion Co.</p> <p>A.C.N 010 828 234 1082 KINGSFORD SMITH DRIVE, EAGLE FARM, QUEENSLAND, 4009 PO BOX 1376, EAGLE FARM BC, 4009 PHONE : (07) 3877 2833 FAX : (07) 3877 2890</p>	CUSTOMER		G. JAMES EXTRUSION Co.	
				WEIGHT	0.434	KG M		CUSTOMER PART NAME		NO.	
PERIMETER	74.0	MM	SCALE		2:1			TOLERANCES IN ACCORDANCE WITH AS 1866-1986		APPLY UNLESS OTHERWISE SPECIFIED	
ANOD PERIM	74.0	MM	DRAWN		BJC			CHECK			
PAINT PERIM	100.0	MM	DATE		25/03/88			DWG. NO.		920-057	
C CIRCLE DIA	32.	MM	REVISION								
FACTOR	171.	MM									
ALLOY	6063	MM									
TEMPER	T6	MM									