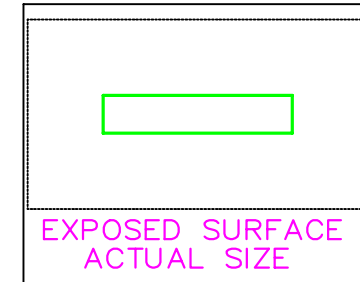
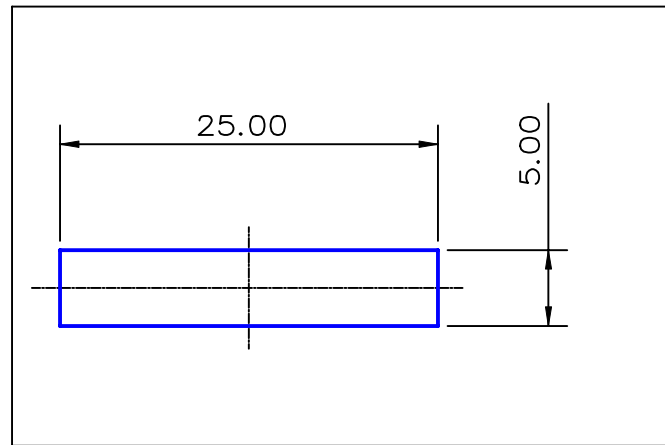



SECTION NO.  
920-047



SECTION DATA:  
 $I_{xx} = 260 \text{ mm}^4$   
 $I_{yy} = 6510 \text{ mm}^4$   
 $\text{Theta} = 1.0$   
 $\text{RadG}_x = 1. \text{ mm}$   
 $\text{RadG}_y = 7. \text{ mm}$   
 $X_{C_{\text{left}}} = 12.5 \text{ mm}$   
 $X_{C_{\text{right}}} = 12.5 \text{ mm}$   
 $Y_{C_{\text{top}}} = 2.5 \text{ mm}$   
 $Y_{C_{\text{bot}}} = 2.5 \text{ mm}$   
 $Z_{xx_{\text{top}}} = 104 \text{ mm}^3$   
 $Z_{xx_{\text{bot}}} = 104 \text{ mm}^3$   
 $Z_{yy_{\text{left}}} = 521 \text{ mm}^3$   
 $Z_{yy_{\text{right}}} = 21 \text{ mm}^3$

0.40 RADIUS ON ALL OUTSIDE CORNERS  
 UNLESS OTHERWISE SPECIFIED  
 EXTRUDED FINISH : ARCHITECTURAL

1	25/03/88	BJC	SECTION WAS 920-225	AREA	125.0	SQ MM	 <p>G. James Extrusion Co.</p> <p>A.C.N 010 828 234                  1082 KINGSFORD SMITH DRIVE, EAGLE FARM, QUEENSLAND, 4009                  PO BOX 1376, EAGLE FARM BC, 4009                  PHONE : (07) 3877 2833 FAX : (07) 3877 2890</p>	CUSTOMER		G. JAMES EXTRUSION Co.		
				WEIGHT	0.339	KG M		CUSTOMER PART NAME		NO.		25 x 5 FLAT BAR
			PERIMETER	60.0	MM	SCALE		TOLERANCES IN ACCORDANCE WITH AS 1866-1986		APPLY UNLESS OTHERWISE SPECIFIED		
			ANOD PERIM	60.0	MM	2:1						
			PAINT PERIM	100.0	MM			DATE		09/03/88		
			C CIRCLE DIA	25.	MM			DRAWN		BJC		
			FACTOR	177.				CHECK				
			ALLOY	6063				DWG. NO.		920-047		
			TEMPER	T6								