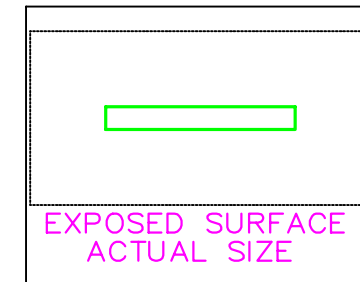
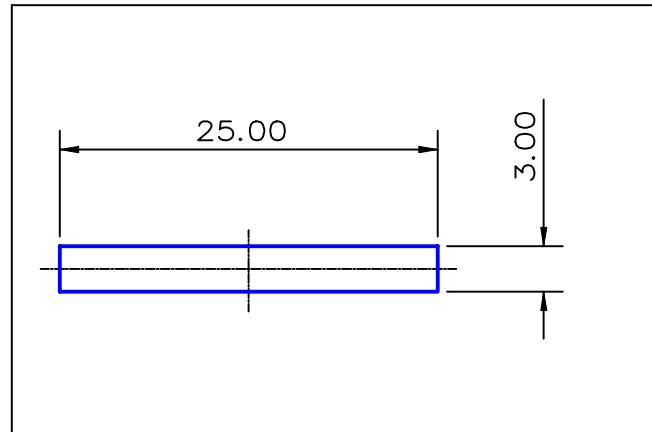


SECTION NO.

920-040



SECTION DATA:
 $I_{xx} = 56 \text{ mm}^4$
 $I_{yy} = 3906 \text{ mm}^4$
 $\text{Theta} = 1.0^\circ$
 $\text{RadG}_x = 1. \text{ mm}$
 $\text{RadG}_y = 7. \text{ mm}$
 $X_{\text{Left}} = 12.5 \text{ mm}$
 $X_{\text{Right}} = 12.5 \text{ mm}$
 $Y_{\text{Top}} = 1.5 \text{ mm}$
 $Y_{\text{Bot}} = 1.5 \text{ mm}$
 $Z_{xx\text{top}} = 38 \text{ mm}^3$
 $Z_{xx\text{bot}} = 38 \text{ mm}^3$
 $Z_{yy\text{left}} = 313 \text{ mm}^3$
 $Z_{yy\text{right}} = 5 \text{ mm}^3$

0.40 RADIUS ON ALL OUTSIDE CORNERS
 UNLESS OTHERWISE SPECIFIED

EXTRUDED FINISH : ARCHITECTURAL

			AREA 75.0 SQ MM WEIGHT 0.203 KG M PERIMETER 56.0 MM ANOD PERIM 56.0 MM PAINT PERIM 100.0 MM C CIRCLE DIA 25. MM FACTOR 276. ALLOY 6063 TEMPER T6	 A.C.N 010 828 234 1082 KINGSFORD SMITH DRIVE, EAGLE FARM, QUEENSLAND, 4009 PO BOX 1376, EAGLE FARM BC, 4009 PHONE : (07) 3877 2833 FAX : (07) 3877 2890	CUSTOMER G. JAMES EXTRUSION Co.	
					CUSTOMER PART NAME NO. 25 x 3 FLAT BAR	
				SCALE 2:1	TOLERANCES IN ACCORDANCE WITH AS 1866-1986 APPLY UNLESS OTHERWISE SPECIFIED	
NO	DATE	DR	REVISION	DRAWN A.T	CHECK DATE 06/03/87	DWG. NO. 920-040