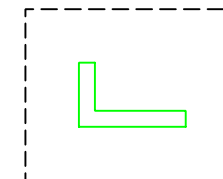
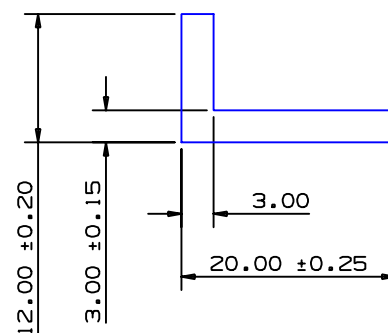


SECTION NO.

901-011

EXPOSED SURFACE  
ACTUAL SIZE

## SECTION DATA:

$I_{xx} = 898 \text{ mm}^4$   
 $I_{yy} = 3366 \text{ mm}^4$   
 $\text{Theta} = 71^\circ$   
 $\text{RadG}_x = 3 \text{ mm}$   
 $\text{RadG}_y = 6 \text{ mm}$   
 $\text{XC}_{\text{Right}} = 12.6 \text{ mm}$   
 $\text{XC}_{\text{Left}} = 7.4 \text{ mm}$   
 $\text{YC}_{\text{top}} = 8.6 \text{ mm}$   
 $\text{YC}_{\text{bot}} = 3.4 \text{ mm}$   
 $\text{Z}_{\text{xx}}^{\text{top}} = 104 \text{ mm}^3$   
 $\text{Z}_{\text{xx}}^{\text{bot}} = 267 \text{ mm}^3$   
 $\text{Z}_{\text{yy}}^{\text{right}} = 266 \text{ mm}^3$   
 $\text{Z}_{\text{yy}}^{\text{left}} = 457 \text{ mm}^3$

0.40 RADIUS ON ALL OUTSIDE CORNERS  
UNLESS OTHERWISE SPECIFIED

EXTRUDED FINISH : ARCHITECTURAL

49512

AREA	87.0	SQ MM
WEIGHT	0.236	KG M
PERIMETER	64.0	MM
ANOD PERIM	64.0	MM
PAINT PERIM	100.0 (0.0)	MM
C CIRCLE DIA	23	MM
FACTOR	271	
ALLOY	6063	
TEMPER	T6	


**G. James  
Extrusion Co.**

A.C.N 010 828 234  
 1082 KINGSFORD SMITH DRIVE, EAGLE FARM, QUEENSLAND, 4009  
 PO BOX 1376, EAGLE FARM BC, 4009  
 PHONE : (07) 3877 2833 FAX : (07) 3877 2890

© COPYRIGHT 2004  
 THIS DRAWING IS THE PROPERTY OF  
 G. JAMES EXTRUSION CO. PTY LTD  
 ALL RIGHTS RESERVED

## CUSTOMER

G. JAMES EXTRUSION Co.

## CUSTOMER PART NAME

## NO.

20 X 12 X 3.0 ANGLE

## SCALE

2:1

TOLERANCES IN ACCORDANCE WITH AS/NZS 1866:1997  
APPLY UNLESS OTHERWISE SPECIFIED

## DRAWN

SPG

## CHECK

## DATE

06/04/10

## DWG. NO.

901-011

NO	DATE	DR	REVISION