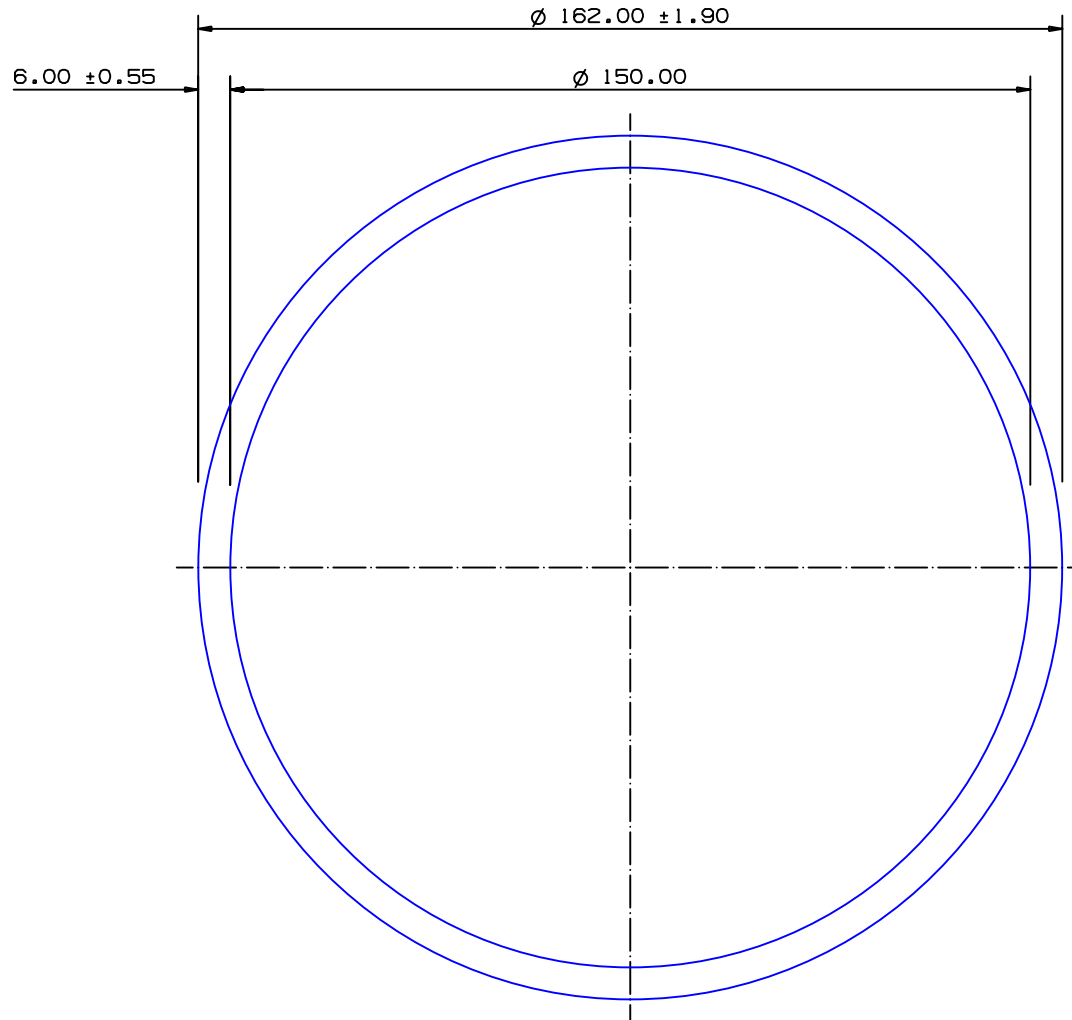


SECTION NO.  
950-560



NO EXPOSED SURFACE

SECTION DATA:  
 $I_{xx} = 8\,958\,327\text{ mm}^4$   
 $I_{yy} = 8\,958\,327\text{ mm}^4$   
 $\text{Theta} = -41.^\circ$   
 $\text{RadG}_x = 55.0\text{ mm}$   
 $\text{RadG}_y = 55.0\text{ mm}$   
 $\text{XC}_{\text{Right}} = 81.0\text{ mm}$   
 $\text{XC}_{\text{Left}} = 81.0\text{ mm}$   
 $\text{YC}_{\text{top}} = 81.0\text{ mm}$   
 $\text{YC}_{\text{bot}} = 81.0\text{ mm}$   
 $Z_{\text{xx}}^{\text{top}} = 110\,597\text{ mm}^3$   
 $Z_{\text{xx}}^{\text{bot}} = 110\,597\text{ mm}^3$   
 $Z_{\text{yy}}^{\text{right}} = 110\,597\text{ mm}^3$   
 $Z_{\text{yy}}^{\text{left}} = 110\,597\text{ mm}^3$

0.40 RADIUS ON ALL OUTSIDE CORNERS  
UNLESS OTHERWISE SPECIFIED

EXTRUDED FINISH : STRUCTURAL

			A
NO	DATE	DR	REVISION

AREA	2940.5	SQ MM
WEIGHT	7.969	KG M
PERIMETER	980.2	MM
ANOD PERIM	508.9	MM
PAINT PERIM	508.9 (0.0)	MM
C CIRCLE DIA	162.	MM
FACTOR	123.	
ALLOY	NV6082	
TEMPER	T6	



A.C.N 010 828 234  
 1082 KINGSFORD SMITH DRIVE, EAGLE FARM, QUEENSLAND, 4009  
 PO BOX 1376, EAGLE FARM BC, 4009  
 PHONE : (07) 3877 2833 FAX : (07) 3877 2890

CUSTOMER G. JAMES EXTRUSION Co.			
CUSTOMER PART NAME 162.0 DIA x 6.0 HOLLOW ROUND		NO.	
SCALE 1:1	TOLERANCES IN ACCORDANCE WITH AS/NZS 1866:1997 APPLY UNLESS OTHERWISE SPECIFIED		
DRAWN PAD	CHECK	DATE 30/11/01	DWG. NO. 950-560