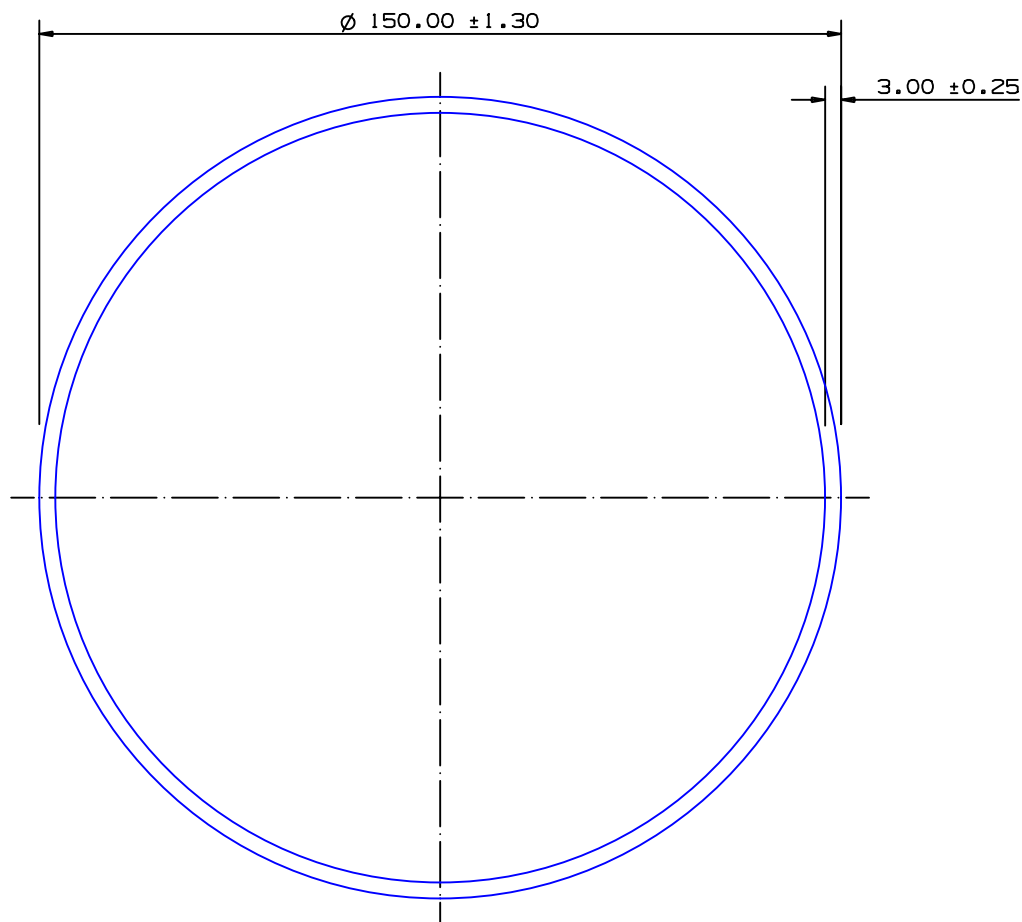


SECTION NO.

950 - 485



THIS SECTION IS SUITABLE FOR NV6082 T6
APPLICATIONS FOR SYDNEY PRESS ONLY

TOTAL SURFACE EXPOSED

SECTION DATA:

$I_{xx} = 3\,743\,812\text{ mm}^4$
 $I_{yy} = 3\,743\,812\text{ mm}^4$
 $\text{Theta} = 1.0^\circ$
 $\text{RadG}_x = 52\text{ mm}$
 $\text{RadG}_y = 52\text{ mm}$
 $\text{XC}_{\text{Right}} = 75.0\text{ mm}$
 $\text{XC}_{\text{Left}} = 75.0\text{ mm}$
 $\text{YC}_{\text{top}} = 75.0\text{ mm}$
 $\text{YC}_{\text{bot}} = 75.0\text{ mm}$
 $\text{Z}_{xx}^{\text{top}} = 49\,917\text{ mm}^3$
 $\text{Z}_{xx}^{\text{bot}} = 49\,917\text{ mm}^3$
 $\text{Z}_{yy}^{\text{right}} = 49\,917\text{ mm}^3$
 $\text{Z}_{yy}^{\text{left}} = 49\,917\text{ mm}^3$

0.40 RADIUS ON ALL OUTSIDE CORNERS
UNLESS OTHERWISE SPECIFIED

EXTRUDED FINISH : ARCHITECTURAL

A

AREA	1385.4	SQ MM
WEIGHT	3.755	KG M
PERIMETER	923.6	MM
ANOD PERIM	471.2	MM
PAINT PERIM	471.2 (0.0)	MM
C CIRCLE DIA	150	MM
FACTOR	246	
ALLOY	6063	
TEMPER	T6	


**G. James
Extrusion Co.**

A.C.N 010 828 234
 1082 KINGSFORD SMITH DRIVE, EAGLE FARM, QUEENSLAND, 4009
 PO BOX 1376, EAGLE FARM BC, 4009
 PHONE : (07) 3877 2833 FAX : (07) 3877 2890

© COPYRIGHT 2004
 THIS DRAWING IS THE PROPERTY OF
 G. JAMES EXTRUSION CO. PTY LTD
 ALL RIGHTS RESERVED

CUSTOMER

G. JAMES EXTRUSION Co.

CUSTOMER PART NAME

NO.

150 X 3 ROUND TUBE

SCALE

1:1

TOLERANCES IN ACCORDANCE WITH AS/NZS 1866:1997
 APPLY UNLESS OTHERWISE SPECIFIED

DRAWN

PDG

CHECK

DATE

12/10/93

DWG. NO.

950-485

1	09/07/12	SP6	'DNV' NOTE ADDED C/N 9383
---	----------	-----	---------------------------

NO	DATE	DR	REVISION