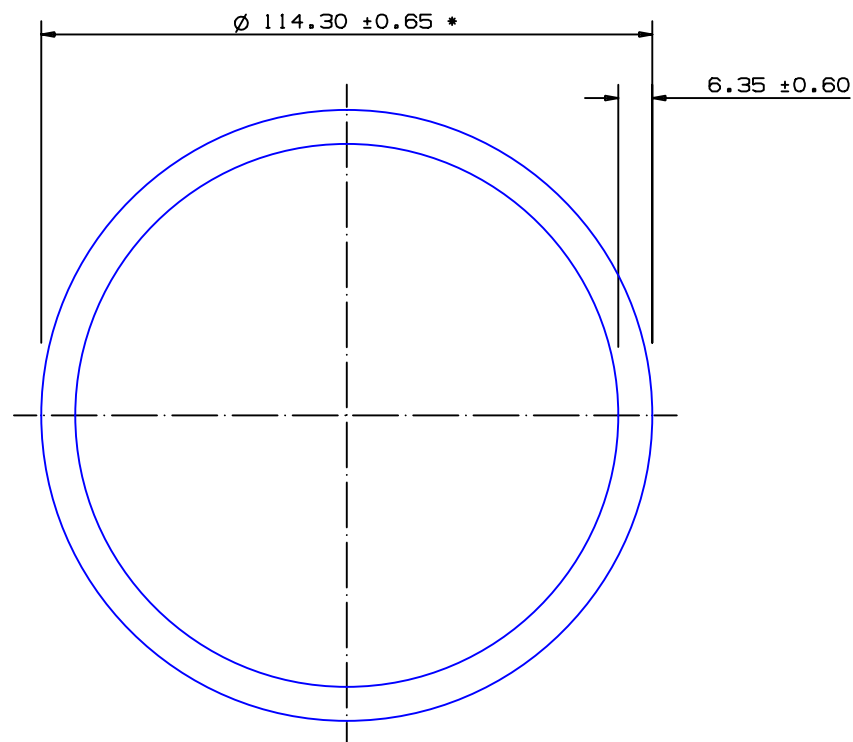


SECTION NO.

950-444



THIS SECTION IS SUITABLE FOR NV6082 T6 APPLICATIONS FOR SYDNEY PRESS ONLY

* = 1/2 STANDARD TOLERANCE

TOTAL SURFACE EXPOSED

SECTION DATA:

$I_{xx} = 3\,147\,761\text{ mm}^4$

$I_{yy} = 3\,147\,761\text{ mm}^4$

Theta = 1.0 °

RadG_x = 38 mm

RadG_y = 38 mm

XC_{Right} = 57.2 mm

XC_{Left} = 57.2 mm

YC_{top} = 57.2 mm

YC_{bot} = 57.2 mm

Z_{xx}^{top} = 55 079 mm³

Z_{xx}^{bot} = 55 079 mm³

Z_{yy}^{right} = 55 079 mm³

Z_{yy}^{left} = 55 079 mm³

0.40 RADIUS ON ALL OUTSIDE CORNERS UNLESS OTHERWISE SPECIFIED

EXTRUDED FINISH : ARCHITECTURAL

A

AREA	2153.5	SQ MM
WEIGHT	5.836	KG M
PERIMETER	678.3	MM
ANOD PERIM	359.1	MM
PAINT PERIM	359.1 (0.0)	MM
C CIRCLE DIA	114	MM
FACTOR	116	
ALLOY	6063	
TEMPER	T5	

 **G. James Extrusion Co.**

A.C.N 010 828 234

1082 KINGSFORD SMITH DRIVE, EAGLE FARM, QUEENSLAND, 4009

PO BOX 1376, EAGLE FARM BC, 4009

PHONE : (07) 3877 2833 FAX : (07) 3877 2890

© COPYRIGHT 2004
THIS DRAWING IS THE PROPERTY OF
G. JAMES EXTRUSION CO. PTY LTD
ALL RIGHTS RESERVED

CUSTOMER

G. JAMES EXTRUSION Co.

CUSTOMER PART NAME

NO.

DIA 114.3 x 6.35 ROUND TUBE

SCALE

1:1

TOLERANCES IN ACCORDANCE WITH AS/NZS 1866:1997
APPLY UNLESS OTHERWISE SPECIFIED

DRAWN

SPG

CHECK

DATE

19/04/00

DWG. NO.

950-444

1

29/06/12

SPG

'DNV' NOTE ADDED C/N 9375

NO

DATE

DR

REVISION