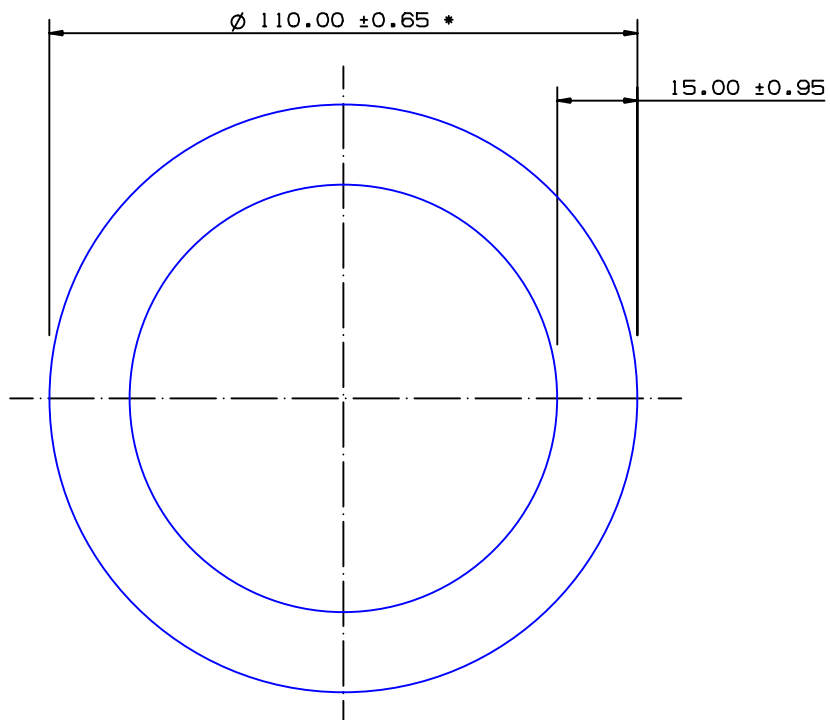


SECTION NO.

950 - 435



THIS SECTION IS SUITABLE FOR NV6082 T6 APPLICATIONS FOR SYDNEY PRESS ONLY

TOTAL SURFACE EXPOSED

\* = 1/2 STANDARD TOLERANCE

SECTION DATA:

$I_{xx} = 5\,176\,265\text{ mm}^4$   
 $I_{yy} = 5\,176\,265\text{ mm}^4$   
 $\text{Theta} = 1.0^\circ$   
 $\text{RadG}_x = 34\text{ mm}$   
 $\text{RadG}_y = 34\text{ mm}$   
 $\text{XC}_{\text{Right}} = 55.0\text{ mm}$   
 $\text{XC}_{\text{Left}} = 55.0\text{ mm}$   
 $\text{YC}_{\text{top}} = 55.0\text{ mm}$   
 $\text{YC}_{\text{bot}} = 55.0\text{ mm}$   
 $\text{Z}_{xx\text{top}} = 94\,114\text{ mm}^3$   
 $\text{Z}_{xx\text{bot}} = 94\,114\text{ mm}^3$   
 $\text{Z}_{yy\text{right}} = 94\,114\text{ mm}^3$   
 $\text{Z}_{yy\text{left}} = 94\,114\text{ mm}^3$

0.40 RADIUS ON ALL OUTSIDE CORNERS UNLESS OTHERWISE SPECIFIED

EXTRUDED FINISH : ARCHITECTURAL

A

AREA	4476.8	SQ MM
WEIGHT	12.132	KG M
PERIMETER	596.9	MM
ANOD PERIM	345.6	MM
PAINT PERIM	345.6 (0.0)	MM
C CIRCLE DIA	110	MM
FACTOR	49	
ALLOY	6063	
TEMPER	T6	


**G. James Extrusion Co.**

A.C.N 010 828 234  
 1082 KINGSFORD SMITH DRIVE, EAGLE FARM, QUEENSLAND, 4009  
 PO BOX 1376, EAGLE FARM BC, 4009  
 PHONE : (07) 3877 2833 FAX : (07) 3877 2890

© COPYRIGHT 2004  
 THIS DRAWING IS THE PROPERTY OF  
 G. JAMES EXTRUSION CO. PTY LTD  
 ALL RIGHTS RESERVED

CUSTOMER  
G. JAMES EXTRUSION Co.

CUSTOMER PART NAME NO.  
110 x 15.0 ROUND TUBE

SCALE  
1:1

TOLERANCES IN ACCORDANCE WITH AS/NZS 1866:1997  
APPLY UNLESS OTHERWISE SPECIFIED

DRAWN SPG	CHECK	DATE 07/10/94	DWG. NO. 950-435
--------------	-------	------------------	---------------------

1	26/06/12	SPG	'DNV' NOTE ADDED C/N 9372
---	----------	-----	---------------------------

NO	DATE	DR	REVISION