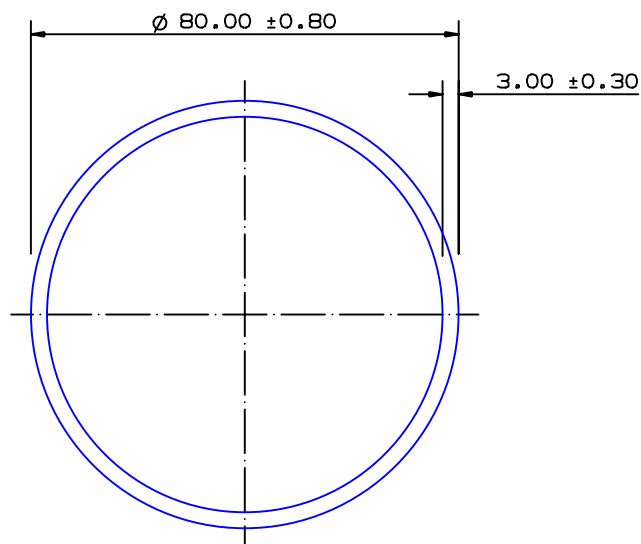


SECTION NO.

950-320



THIS SECTION IS SUITABLE FOR NV6082 T6
APPLICATIONS FOR SYDNEY PRESS ONLY

TOTAL SURFACE EXPOSED

SECTION DATA:

$I_{xx} = 538\ 657\ \text{mm}^4$
 $I_{yy} = 538\ 657\ \text{mm}^4$
 $\text{Theta} = 1.0^\circ$
 $\text{RadG}_x = 27\ \text{mm}$
 $\text{RadG}_y = 27\ \text{mm}$
 $\text{XC}_{\text{Right}} = 40.0\ \text{mm}$
 $\text{XC}_{\text{Left}} = 40.0\ \text{mm}$
 $\text{YC}_{\text{top}} = 40.0\ \text{mm}$
 $\text{YC}_{\text{bot}} = 40.0\ \text{mm}$
 $Z_{xx_{\text{top}}} = 13\ 466\ \text{mm}^3$
 $Z_{xx_{\text{bot}}} = 13\ 466\ \text{mm}^3$
 $Z_{yy_{\text{right}}} = 13\ 466\ \text{mm}^3$
 $Z_{yy_{\text{left}}} = 13\ 466\ \text{mm}^3$

0.40 RADIUS ON ALL OUTSIDE CORNERS
UNLESS OTHERWISE SPECIFIED

EXTRUDED FINISH : ARCHITECTURAL

A

AREA	725.7	SQ MM
WEIGHT	1.967	KG M
PERIMETER	483.8	MM
ANOD PERIM	251.3	MM
PAINT PERIM	251.3 (0.0)	MM
C CIRCLE DIA	80	MM
FACTOR	246	
ALLOY	6063	
TEMPER	T6	


**G. James
Extrusion Co.**

© COPYRIGHT 2004
 THIS DRAWING IS THE PROPERTY OF
 G. JAMES EXTRUSION CO. PTY LTD
 ALL RIGHTS RESERVED

A.C.N 010 828 234

1082 KINGSFORD SMITH DRIVE, EAGLE FARM, QUEENSLAND, 4009
 PO BOX 1376, EAGLE FARM BC, 4009
 PHONE : (07) 3877 2833 FAX : (07) 3877 2890

CUSTOMER

G. JAMES EXTRUSION Co.

CUSTOMER PART NAME

NO.

80 x 3 ROUND TUBE

SCALE

1 : 1

TOLERANCES IN ACCORDANCE WITH AS/NZS 1866:1997
 APPLY UNLESS OTHERWISE SPECIFIED

DRAWN

BJC

CHECK

DATE

03/03/88

DWG. NO.

950-320

2
1

12/04/12
25/03/88

SP6
BJC

'DNV' NOTE ADDED C/N 9243
 SECTION NUMBER WAS 950-405

NO

DATE

DR

REVISION