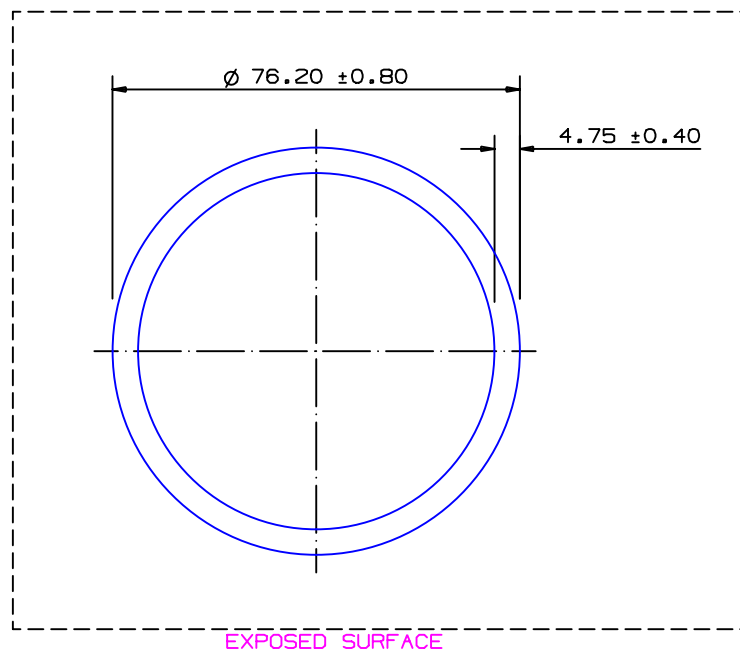


SECTION NO.

950-303



EXPOSED SURFACE

THIS SECTION IS SUITABLE FOR NV6082 T6
APPLICATIONS FOR SYDNEY PRESS ONLY

SECTION DATA:

$I_{xx} = 683\,401\text{ mm}^4$
 $I_{yy} = 683\,401\text{ mm}^4$
 $\text{Theta} = 0^\circ$
 $\text{RadG}_x = 25\text{ mm}$
 $\text{RadG}_y = 25\text{ mm}$
 $\text{XC}_{\text{Right}} = 38.1\text{ mm}$
 $\text{XC}_{\text{Left}} = 38.1\text{ mm}$
 $\text{YC}_{\text{top}} = 38.1\text{ mm}$
 $\text{YC}_{\text{bot}} = 38.1\text{ mm}$
 $Z_{xx}^{\text{top}} = 17\,937\text{ mm}^3$
 $Z_{xx}^{\text{bot}} = 17\,937\text{ mm}^3$
 $Z_{yy}^{\text{right}} = 17\,937\text{ mm}^3$
 $Z_{yy}^{\text{left}} = 17\,937\text{ mm}^3$

0.40 RADIUS ON ALL OUTSIDE CORNERS
UNLESS OTHERWISE SPECIFIED

EXTRUDED FINISH : ARCHITECTURAL

A				AREA	1066.2	SQ MM	 <p>© COPYRIGHT 2004 THIS DRAWING IS THE PROPERTY OF G. JAMES EXTRUSION CO. PTY LTD ALL RIGHTS RESERVED</p> <p>A.C.N 010 828 234 1082 KINGSFORD SMITH DRIVE, EAGLE FARM, QUEENSLAND, 4009 PO BOX 1376, EAGLE FARM BC, 4009 PHONE : (07) 3877 2833 FAX : (07) 3877 2890</p>	CUSTOMER	G. JAMES EXTRUSION Co.		
NO	DATE	DR	REVISION	WEIGHT	2.889	KG M		CUSTOMER PART NAME	NO.		
1	12/04/12	SP6	'DNV' NOTE ADDED C/N 9241	PERIMETER	448.9	MM		76.20 x 4.75 ROUND TUBE			
				ANOD PERIM	239.4	MM		SCALE	1:1		
				PAINT PERIM	239.4 (0.0)	MM		TOLERANCES IN ACCORDANCE WITH AS/NZS 1866:1997 APPLY UNLESS OTHERWISE SPECIFIED			
				CIRCLE DIA	76	MM		DRAWN	JS0	CHECK	
				FACTOR	155			DATE	04/03/93		
				ALLOY	6063			DWG. NO.	950-303		
				TEMPER	T6						