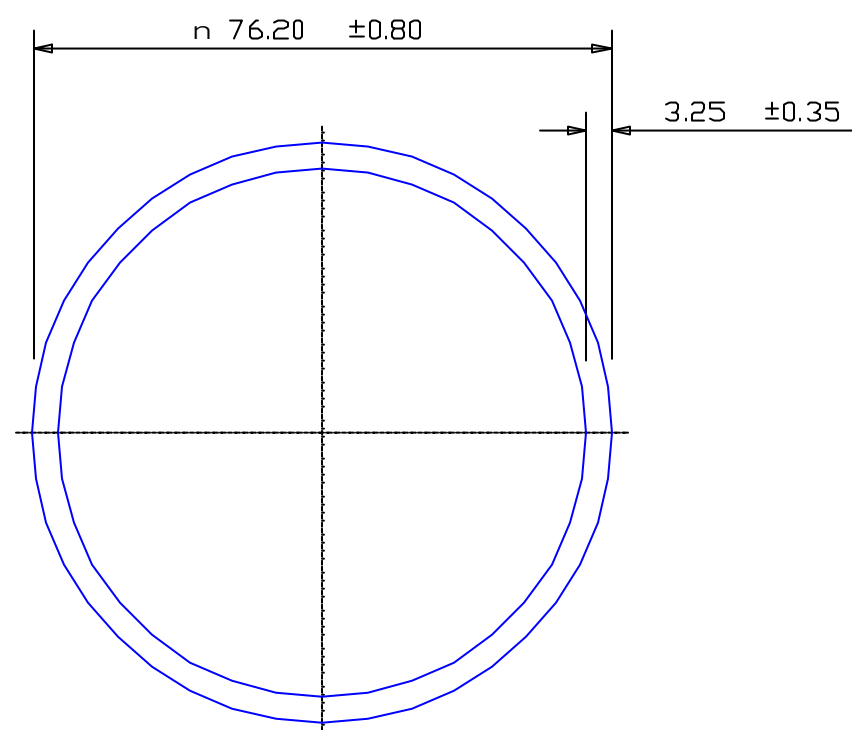


SECTION NO.

950-297



TOTAL SURFACE EXPOSED

SECTION DATA:

 $I_{xx} = 496\,455\text{ mm}^4$  $I_{yy} = 496\,455\text{ mm}^4$ Theta =  $1.0^\circ$ RadG<sub>x</sub> = 26 mmRadG<sub>y</sub> = 26 mmXC<sub>Right</sub> = 38.1 mmXC<sub>Left</sub> = 38.1 mmYC<sub>top</sub> = 38.1 mmYC<sub>bot</sub> = 38.1 mmZ<sub>xx</sub>top = 13 030 mm<sup>3</sup>Z<sub>xx</sub>bot = 13 030 mm<sup>3</sup>Z<sub>yy</sub>right = 13 030 mm<sup>3</sup>Z<sub>yy</sub>left = 13 030 mm<sup>3</sup>0.40 RADIUS ON ALL OUTSIDE CORNERS  
UNLESS OTHERWISE SPECIFIED

EXTRUDED FINISH + ARCHITECTURAL

		A	39886	AREA	744.8	SQ MM	 <p>G. James Extrusion Co.</p> <p>A.C.N 010 828 234 1082 KINGSFORD SMITH DRIVE, EAGLE FARM, QUEENSLAND, 4009 PO BOX 1376, EAGLE FARM BC, 4009 PHONE : (07) 3877 2833 FAX : (07) 3877 2890</p>	CUSTOMER		G. JAMES EXTRUSION Co.		
				WEIGHT	2.018	KG M		CUSTOMER PART NAME		NO.		
				PERIMETER	458.4	MM		DIA 76.20 x 3.25 ROUND TUBE				
				ANOD PERIM	239.4	MM		SCALE		TOLERANCES IN ACCORDANCE WITH AS 1866-1986 APPLY UNLESS OTHERWISE SPECIFIED		
				PAINT PERIM	239.4 (0.0)	MM		1:1				
				C CIRCLE DIA	76	MM		DRAWN		CHECK	DATE	DWG. NO.
				FACTOR	227			SPG			19/09/02	950-297
1	22/10/02	SPG	76.20 WAS 76.0	ALLOY	6063							
NO	DATE	DR	REVISION	TEMPER	T6							