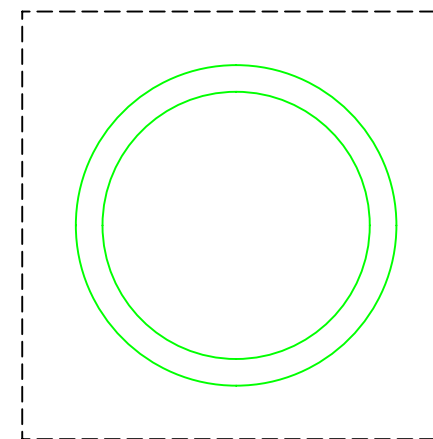
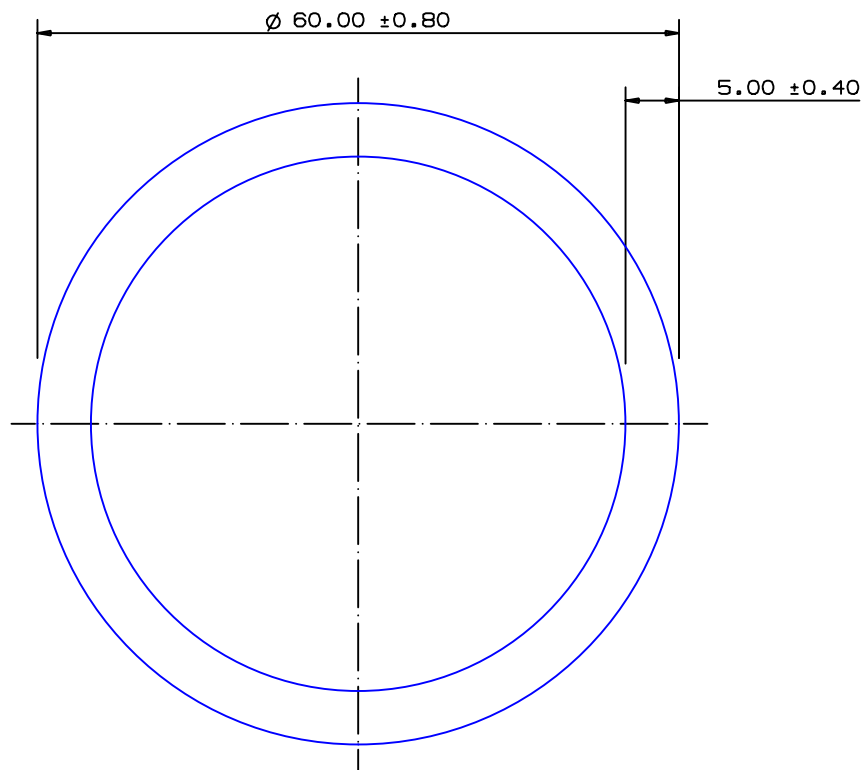


SECTION NO.

950-217

EXPOSED SURFACE
ACTUAL SIZETHIS SECTION IS SUITABLE FOR NV6082 T6
APPLICATIONS FOR SYDNEY PRESS ONLY

SECTION DATA:

$I_{xx} = 329\,376 \text{ mm}^4$
 $I_{yy} = 329\,376 \text{ mm}^4$
 $\text{Theta} = 1.0^\circ$
 $\text{RadG}_x = 20 \text{ mm}$
 $\text{RadG}_y = 20 \text{ mm}$
 $\text{XC}_{\text{Right}} = 30.0 \text{ mm}$
 $\text{XC}_{\text{Left}} = 30.0 \text{ mm}$
 $\text{YC}_{\text{Top}} = 30.0 \text{ mm}$
 $\text{YC}_{\text{Bot}} = 30.0 \text{ mm}$
 $Z_{xx}^{\text{Top}} = 10\,979 \text{ mm}^3$
 $Z_{xx}^{\text{Bot}} = 10\,979 \text{ mm}^3$
 $Z_{yy}^{\text{Right}} = 10\,979 \text{ mm}^3$
 $Z_{yy}^{\text{Left}} = 10\,979 \text{ mm}^3$

0.40 RADIUS ON ALL OUTSIDE CORNERS
UNLESS OTHERWISE SPECIFIED

EXTRUDED FINISH : ARCHITECTURAL

A

AREA	863.9	SQ MM
WEIGHT	2.341	KG M
PERIMETER	345.6	MM
ANOD PERIM	188.5	MM
PAINT PERIM	188.5 (0.0)	MM
C CIRCLE DIA	60	MM
FACTOR	148	
ALLOY	6063	
TEMPER	T6	


**G. James
Extrusion Co.**

A.C.N 010 828 234
 1082 KINGSFORD SMITH DRIVE, EAGLE FARM, QUEENSLAND, 4009
 PO BOX 1376, EAGLE FARM BC, 4009
 PHONE : (07) 3877 2833 FAX : (07) 3877 2890

© COPYRIGHT 2004
 THIS DRAWING IS THE PROPERTY OF
 G. JAMES EXTRUSION CO. PTY LTD
 ALL RIGHTS RESERVED

CUSTOMER

G. JAMES EXTRUSION Co.

CUSTOMER PART NAME

NO.

60 x 5.0 ROUND TUBE

SCALE

2:1

TOLERANCES IN ACCORDANCE WITH AS/NZS 1866:1997
APPLY UNLESS OTHERWISE SPECIFIED

DRAWN

PDG

CHECK

DATE

23/07/91

DWG. NO.

950-217

2	30/03/12	SP6	'DNV' NOTE ADDED C/N 9225
1	25/07/91	BPW	SECTION PROPERTIES CORRECTED C/N 864

NO	DATE	DR	REVISION
----	------	----	----------