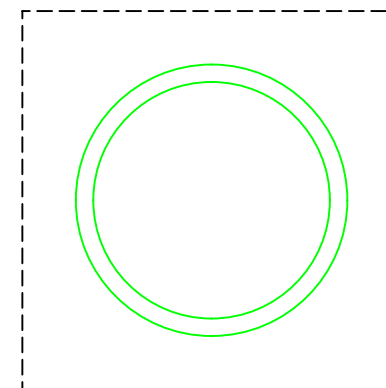
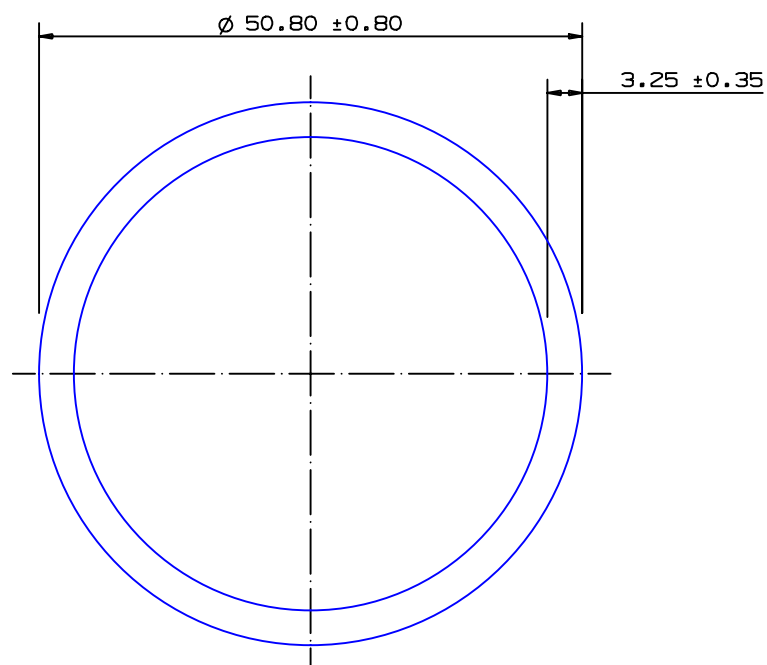


SECTION NO.

950-200

EXPOSED SURFACE
ACTUAL SIZETHIS SECTION IS SUITABLE FOR NV6082 T6
APPLICATIONS FOR SYDNEY PRESS ONLY

SECTION DATA:

$I_{xx} = 137\,854\text{ mm}^4$
 $I_{yy} = 137\,854\text{ mm}^4$
 $\text{Theta} = 0^\circ$
 $\text{RadG}_x = 17\text{ mm}$
 $\text{RadG}_y = 17\text{ mm}$
 $\text{XC}_{\text{Right}} = 25.4\text{ mm}$
 $\text{XC}_{\text{Left}} = 25.4\text{ mm}$
 $\text{YC}_{\text{top}} = 25.4\text{ mm}$
 $\text{YC}_{\text{bot}} = 25.4\text{ mm}$
 $Z_{xx}^{\text{top}} = 5\,427\text{ mm}^3$
 $Z_{xx}^{\text{bot}} = 5\,427\text{ mm}^3$
 $Z_{yy}^{\text{right}} = 5\,427\text{ mm}^3$
 $Z_{yy}^{\text{left}} = 5\,427\text{ mm}^3$

0.40 RADIUS ON ALL OUTSIDE CORNERS
UNLESS OTHERWISE SPECIFIED

EXTRUDED FINISH : ARCHITECTURAL

A

AREA	485.5	SQ MM
WEIGHT	1.316	KG M
PERIMETER	298.8	MM
ANOD PERIM	159.6	MM
PAINT PERIM	159.6 (0.0)	MM
C CIRCLE DIA	51	MM
FACTOR	227	
ALLOY	6063	
TEMPER	T6	


**G. James
Extrusion Co.**

A.C.N 010 828 234

1082 KINGSFORD SMITH DRIVE, EAGLE FARM, QUEENSLAND, 4009
 PO BOX 1376, EAGLE FARM BC, 4009
 PHONE : (07) 3877 2833 FAX : (07) 3877 2890

© COPYRIGHT 2004
 THIS DRAWING IS THE PROPERTY OF
 G. JAMES EXTRUSION CO. PTY LTD
 ALL RIGHTS RESERVED

CUSTOMER

G. JAMES EXTRUSION Co.

CUSTOMER PART NAME

NO.

50.80 x 3.25 ROUND TUBE

SCALE

2:1

TOLERANCES IN ACCORDANCE WITH AS/NZS 1866:1997
 APPLY UNLESS OTHERWISE SPECIFIED

DRAWN

JWC

CHECK

DATE

06/04/87

DWG. NO.

950-200

1

30/03/12

SP6

'DNV' NOTE ADDED C/N 9224

NO

DATE

DR

REVISION