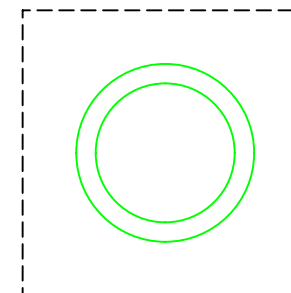
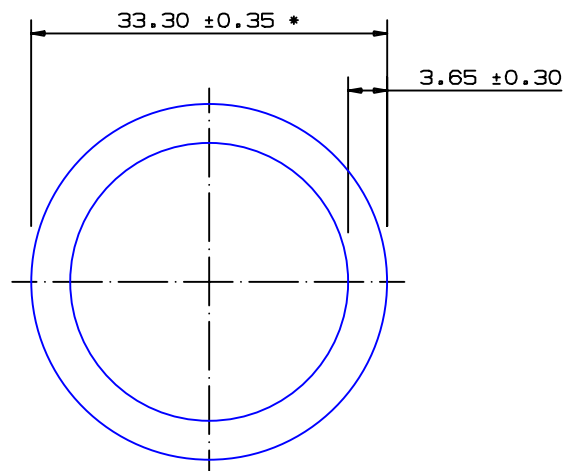


SECTION NO.

950-091

EXPOSED SURFACE
ACTUAL SIZETHIS SECTION IS SUITABLE FOR NV6082 T6
APPLICATIONS FOR SYDNEY PRESS ONLY

* = 1/2 STANDARD TOLERANCE

SECTION DATA:

$I_{xx} = 37\,928 \text{ mm}^4$
 $I_{yy} = 37\,928 \text{ mm}^4$
 $\text{Theta} = 1.0^\circ$
 $\text{RadG}_x = 11 \text{ mm}$
 $\text{RadG}_y = 11 \text{ mm}$
 $\text{XC}_{\text{Right}} = 16.7 \text{ mm}$
 $\text{XC}_{\text{Left}} = 16.7 \text{ mm}$
 $\text{YC}_{\text{Top}} = 16.7 \text{ mm}$
 $\text{YC}_{\text{Bot}} = 16.7 \text{ mm}$
 $Z_{xx}^{\text{top}} = 2\,278 \text{ mm}^3$
 $Z_{xx}^{\text{bot}} = 2\,278 \text{ mm}^3$
 $Z_{yy}^{\text{right}} = 2\,278 \text{ mm}^3$
 $Z_{yy}^{\text{left}} = 2\,278 \text{ mm}^3$

0.40 RADIUS ON ALL OUTSIDE CORNERS
UNLESS OTHERWISE SPECIFIED

EXTRUDED FINISH : ARCHITECTURAL

A

AREA	340.0	SQ MM
WEIGHT	0.921	KG M
PERIMETER	186.3	MM
ANOD PERIM	104.6	MM
PAINT PERIM	104.6 (0.0)	MM
C CIRCLE DIA	33	MM
FACTOR	202	
ALLOY	6063	
TEMPER	T6	


**G. James
Extrusion Co.**

A.C.N 010 828 234
 1082 KINGSFORD SMITH DRIVE, EAGLE FARM, QUEENSLAND, 4009
 PO BOX 1376, EAGLE FARM BC, 4009
 PHONE : (07) 3877 2833 FAX : (07) 3877 2890

© COPYRIGHT 2004
 THIS DRAWING IS THE PROPERTY OF
 G. JAMES EXTRUSION CO. PTY LTD
 ALL RIGHTS RESERVED

CUSTOMER

G. JAMES EXTRUSION Co.

CUSTOMER PART NAME

NO.

33.0 x 3.60 ROUND TUBE

SCALE

2:1

TOLERANCES IN ACCORDANCE WITH AS/NZS 1866:1997
APPLY UNLESS OTHERWISE SPECIFIED

DRAWN

SPG

CHECK

DATE

27/11/97

DWG. NO.

950-091

NO	DATE	DR	REVISION
4	26/03/12	SPG	'DNV' NOTE ADDED C/N 9212
3	12/03/98	PAD	0.35 TOLERANCE WAS 0.70 TOLERANCE C/N 3292
2	02/12/97	SPG	33.30 3.65 WERE 33.0 3.60
1	01/12/97	SPG	3.60 WAS 3.0