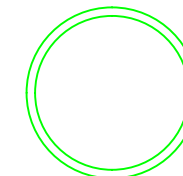
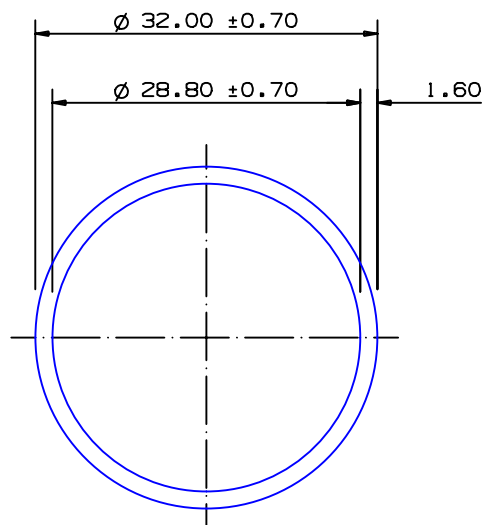


SECTION NO.

950-090



ACTUAL SIZE  
NO EXPOSED SURFACE

## SECTION DATA:

$I_{xx} = 17\,701 \text{ mm}^4$   
 $I_{yy} = 17\,701 \text{ mm}^4$   
 $\text{Theta} = 1.0^\circ$   
 $\text{RadG}_x = 11 \text{ mm}$   
 $\text{RadG}_y = 11 \text{ mm}$   
 $\text{XC}_{\text{Right}} = 16.0 \text{ mm}$   
 $\text{XC}_{\text{Left}} = 16.0 \text{ mm}$   
 $\text{YC}_{\text{top}} = 16.0 \text{ mm}$   
 $\text{YC}_{\text{bot}} = 16.0 \text{ mm}$   
 $Z_{xx\text{top}} = 1\,106 \text{ mm}^3$   
 $Z_{xx\text{bot}} = 1\,106 \text{ mm}^3$   
 $Z_{yy\text{right}} = 1\,106 \text{ mm}^3$   
 $Z_{yy\text{left}} = 1\,106 \text{ mm}^3$

0.40 RADIUS ON ALL OUTSIDE CORNERS  
UNLESS OTHERWISE SPECIFIED

EXTRUDED FINISH : ARCHITECTURAL

A

|              |             |       |
|--------------|-------------|-------|
| AREA         | 152.8       | SQ MM |
| WEIGHT       | 0.414       | KG M  |
| PERIMETER    | 191.0       | MM    |
| ANOD PERIM   | 100.5       | MM    |
| PAINT PERIM  | 100.5 (0.0) | MM    |
| C CIRCLE DIA | 32          | MM    |
| FACTOR       | 461         |       |
| ALLOY        | 6063        |       |
| TEMPER       | T6          |       |


**G. James  
Extrusion Co.**

A.C.N 010 828 234  
 1082 KINGSFORD SMITH DRIVE, EAGLE FARM, QUEENSLAND, 4009  
 PO BOX 1376, EAGLE FARM BC, 4009  
 PHONE : (07) 3877 2833 FAX : (07) 3877 2890

© COPYRIGHT 2004  
 THIS DRAWING IS THE PROPERTY OF  
 G. JAMES EXTRUSION CO. PTY LTD  
 ALL RIGHTS RESERVED

## CUSTOMER

G. JAMES EXTRUSION Co.

## CUSTOMER PART NAME

NO.

32.0 x 1.60 ROUND TUBE

## SCALE

2:1

TOLERANCES IN ACCORDANCE WITH AS/NZS 1866:1997  
APPLY UNLESS OTHERWISE SPECIFIED

## DRAWN

JWC

## CHECK

## DATE

06/04/87

## DWG. NO.

950-090

|   |          |     |  |
|---|----------|-----|--|
| 1 | 18/10/11 | SP6 | INTERNAL DIMENSION & TOLERANCES ADDED C/N 9010 |
|---|----------|-----|--|

| NO | DATE | DR | REVISION |
|----|------|----|----------|
|----|------|----|----------|