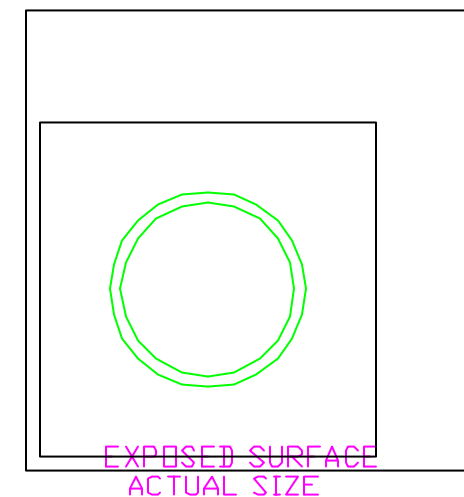
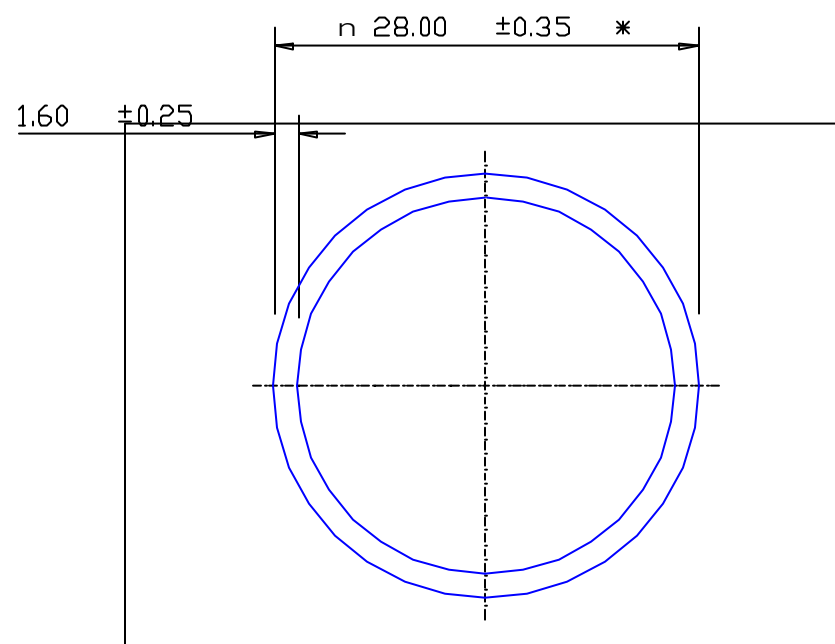


SECTION NO.
950-068



* = 1/2 STD TOLERANCE

SECTION DATA:
 $I_{xx} = 11\,603 \text{ mm}^4$
 $I_{yy} = 11\,603 \text{ mm}^4$
 $\text{Theta} = 0,^\circ$
 $\text{RadG}_x = 9. \text{ mm}$
 $\text{RadG}_y = 9. \text{ mm}$
 $\text{XC}_{\text{Right}} = 14.0 \text{ mm}$
 $\text{XC}_{\text{Left}} = 14.0 \text{ mm}$
 $\text{YC}_{\text{top}} = 14.0 \text{ mm}$
 $\text{YC}_{\text{bot}} = 14.0 \text{ mm}$
 $Z_{xx\text{top}} = 829 \text{ mm}^3$
 $Z_{xx\text{bot}} = 829 \text{ mm}^3$
 $Z_{yy\text{right}} = 829 \text{ mm}^3$
 $Z_{yy\text{left}} = 829 \text{ mm}^3$

0.40 RADIUS ON ALL OUTSIDE CORNERS
UNLESS OTHERWISE SPECIFIED

EXTRUDED FINISH : ARCHITECTURAL

			A		AREA 132.7	SQ MM	 <p>G. James Extrusion Co.</p> <p>A.C.N 010 828 234 1082 KINGSFORD SMITH DRIVE, EAGLE FARM, QUEENSLAND, 4009 PO BOX 1376, EAGLE FARM BC, 4009 PHONE : (07) 3877 2833 FAX : (07) 3877 2890</p>	CUSTOMER		G. JAMES EXTRUSION Co.	
					WEIGHT 0.360	KG M		CUSTOMER PART NAME NO.		28.0 DIA. x 1.6 ROUND TUBE	
					PERIMETER 165.9	MM		SCALE		2:1	
					ANOD PERIM 88.0	MM		TOLERANCES IN ACCORDANCE WITH AS 1866-1986		APPLY UNLESS OTHERWISE SPECIFIED	
					PAINT PERIM 100.0	MM		DRAWN		PAD	
					C CIRCLE DIA 28.	MM		CHECK		DATE	
					FACTOR 461.			DATE		27/02/02	
					ALLOY 6063			DWG. NO.		950-068	
					TEMPER T5						
NO	DATE	DR	REVISION								