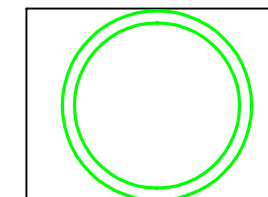
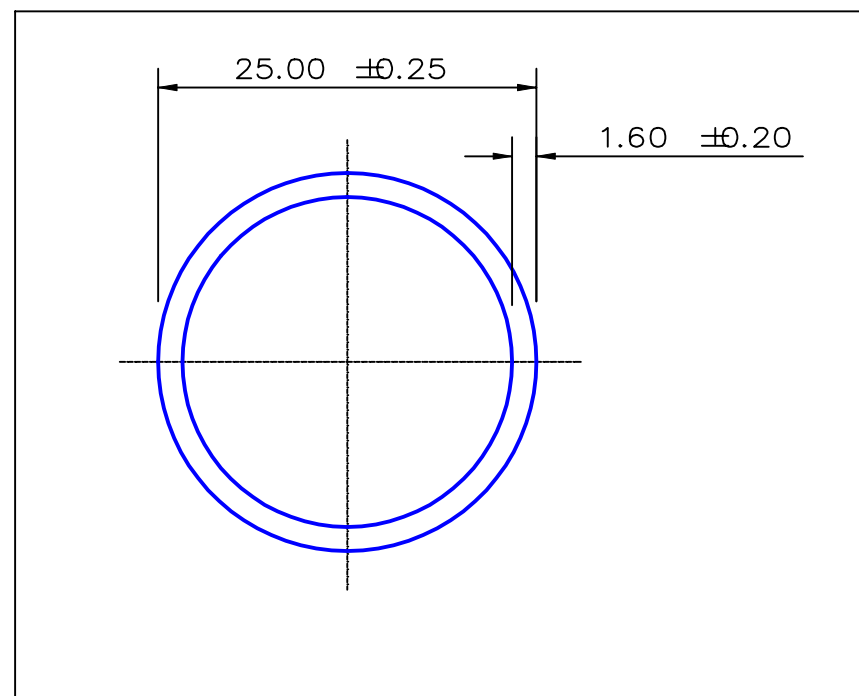


SECTION NO.
950-055



TOTAL EXPOSED SURFACE
ACTUAL SIZE

SECTION DATA:
 $I_{xx} = 8\,088 \text{ mm}^4$
 $I_{yy} = 8\,088 \text{ mm}^4$
 $\text{Theta} = 1.0$
 $\text{RadG}_x = 8. \text{ mm}$
 $\text{RadG}_y = 8. \text{ mm}$
 $X_{\text{Left}} = 12.5 \text{ mm}$
 $X_{\text{Right}} = 12.5 \text{ mm}$
 $Y_{\text{Top}} = 12.5 \text{ mm}$
 $Y_{\text{Bot}} = 12.5 \text{ mm}$
 $Z_{xx}^{\text{top}} = 647 \text{ mm}^3$
 $Z_{xx}^{\text{bot}} = 647 \text{ mm}^3$
 $Z_{yy}^{\text{left}} = 647 \text{ mm}^3$
 $Z_{yy}^{\text{right}} = 647 \text{ mm}^3$

0.40 RADIUS ON ALL OUTSIDE CORNERS
UNLESS OTHERWISE SPECIFIED

EXTRUDED FINISH : ARCHITECTURAL

				A		AREA	117.6	SQ MM	 <p>G. James Extrusion Co.</p> <p>A.C.N 010 828 234 1082 KINGSFORD SMITH DRIVE, EAGLE FARM, QUEENSLAND, 4009 PO BOX 1376, EAGLE FARM BC, 4009 PHONE : (07) 3877 2833 FAX : (07) 3877 2890</p>	CUSTOMER			G. JAMES EXTRUSION Co.		
						WEIGHT	0.319	KG M		CUSTOMER PART NAME			NO.		
						PERIMETER	147.0	MM		25 x 1.6 ROUND TUBE					
						ANOD PERIM	78.5	MM		SCALE			TOLERANCES IN ACCORDANCE WITH AS 1866-1986 APPLY UNLESS OTHERWISE SPECIFIED		
						PAINT PERIM	100.0	MM		2:1					
						C CIRCLE DIA	25.	MM		DRAWN			CHECK		
						FACTOR	461.			JWC			DATE		
						ALLOY	6063						06/04/87		
						TEMPER	T6						DWG. NO.		
													950-055		
NO	DATE	DR	REVISION												