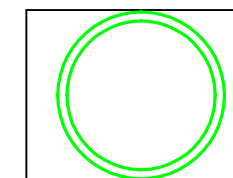
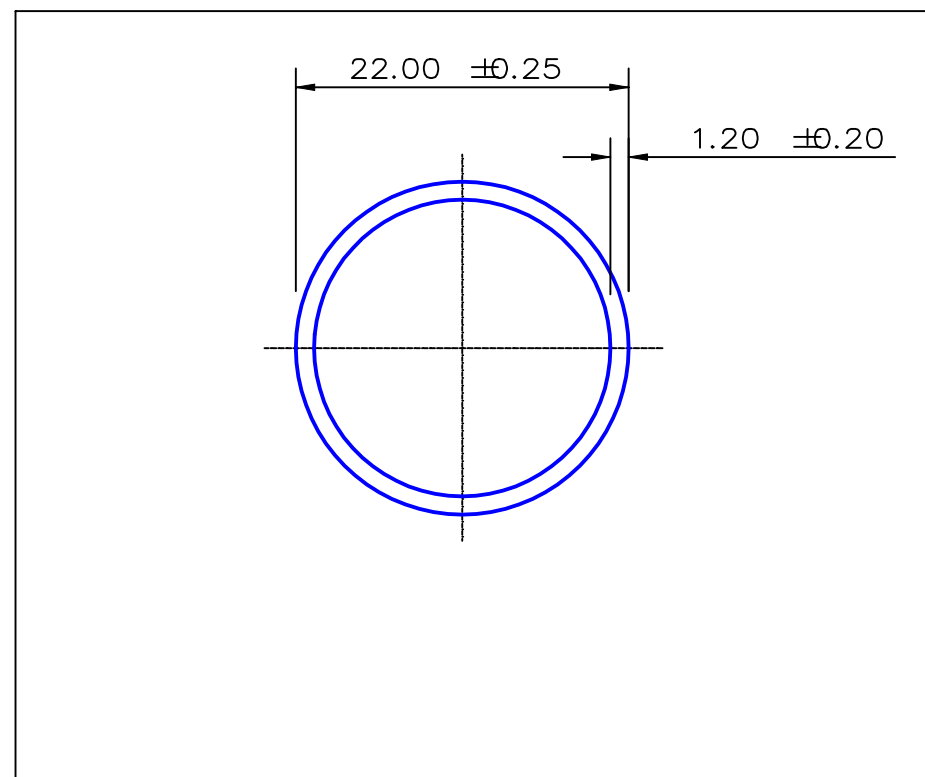


SECTION NO.
950-036



TOTAL EXPOSED SURFACE
ACTUAL SIZE

SECTION DATA:
 $I_{xx} = 4255 \text{ mm}^4$
 $I_{yy} = 4255 \text{ mm}^4$
 $\text{Theta} = 1.0$
 $\text{RadG}_x = 7. \text{ mm}$
 $\text{RadG}_y = 7. \text{ mm}$
 $X_{\text{Qleft}} = 11.0 \text{ mm}$
 $X_{\text{Qright}} = 11.0 \text{ mm}$
 $Y_{\text{Ctop}} = 11.0 \text{ mm}$
 $Y_{\text{Cbot}} = 11.0 \text{ mm}$
 $Z_{xx\text{top}} = 387 \text{ mm}^3$
 $Z_{xx\text{bot}} = 387 \text{ mm}^3$
 $Z_{yy\text{left}} = 387 \text{ mm}^3$
 $Z_{yy\text{right}} = 387 \text{ mm}^3$

0.40 RADIUS ON ALL OUTSIDE CORNERS
UNLESS OTHERWISE SPECIFIED

EXTRUDED FINISH : ARCHITECTURAL

				A		AREA	78.4	SQ MM	 G. James Extrusion Co. A.C.N 010 828 234 1082 KINGSFORD SMITH DRIVE, EAGLE FARM, QUEENSLAND, 4009 PO BOX 1376, EAGLE FARM BC, 4009 PHONE : (07) 3877 2833 FAX : (07) 3877 2890	CUSTOMER			G. JAMES EXTRUSION Co.		
						WEIGHT	0.213	KG M		CUSTOMER PART NAME			NO. 22.0 x 1.2 ROUND TUBE		
						PERIMETER	130.7	MM		SCALE		2:1		TOLERANCES IN ACCORDANCE WITH AS 1866-1986 APPLY UNLESS OTHERWISE SPECIFIED	
						ANOD PERIM	69.1	MM		DRAWN	CHECK	DATE	DWG. NO.		
						PAINT PERIM	100.0	MM		JWC		06/04/87	950-036		
						C CIRCLE DIA	22.	MM							
						FACTOR	615.								
						ALLOY	6063								
						TEMPER	T6								
NO	DATE	DR	REVISION												