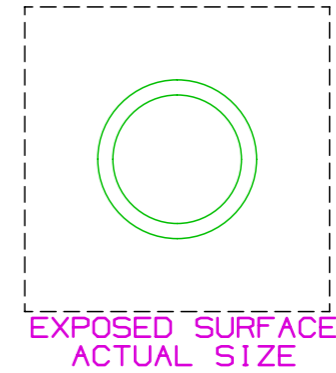
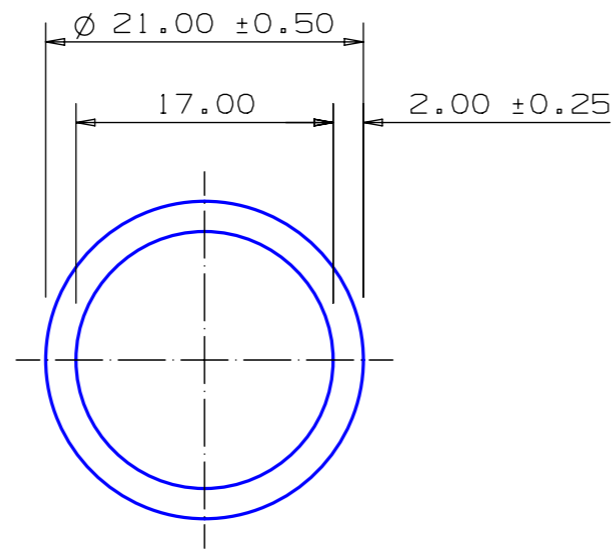


SECTION NO.  
950-033



MOMENTS OF INERTIA:  
 $I_{xx} = 5\,447\text{ mm}^4$   
 $I_{yy} = 5\,447\text{ mm}^4$   
 $RadG_x = 7\text{ mm}$   
 $RadG_y = 7\text{ mm}$   
 $XC_{Right} = 10.50\text{ mm}$   
 $XC_{Left} = 10.50\text{ mm}$   
 $YC_{top} = 10.50\text{ mm}$   
 $YC_{bot} = 10.50\text{ mm}$   
 $Z_{xx_{top}} = 519\text{ mm}^3$   
 $Z_{xx_{bot}} = 519\text{ mm}^3$   
 $Z_{yy_{right}} = 519\text{ mm}^3$   
 $Z_{yy_{left}} = 519\text{ mm}^3$

0.40 RADIUS ON ALL OUTSIDE CORNERS  
UNLESS OTHERWISE SPECIFIED

EXTRUDED FINISH : ARCHITECTURAL

		<b>A</b>		<b>32518</b>		AREA	119.4	SQ MM	<p>G. James Extrusion Co Pty Ltd P (07) 3877 2833 F (07) 3877 2890 www.gjames.com</p> <p>ABN 95 010 828 234 www.gjames.com</p>	CUSTOMER		<b>G. JAMES EXTRUSION Co.</b>	
						WEIGHT	0.324	KG M		CUSTOMER PART NAME		<b>21.0 × 2.0 ROUND TUBE</b>	
						PERIMETER	119.4	MM		CUSTOMER PART NO.			
						ANOD PERIM	66.0	MM		SCALE		<b>2:1</b>	
						PAIN PERIM	100.0	MM		TOLERANCES IN ACCORDANCE WITH AS/NZS 1866:1997 APPLY UNLESS OTHERWISE SPECIFIED			
						POLISH PERIM	0.0	MM				DRAWN	
						C CIRCLE DIA	21	MM		DATE		<b>14/12/99</b>	
						FACTOR	369			DWG. NO.		<b>950-033</b>	
						ALLOY	6060						
						TEMPER	T5						
NO	DATE	DR	REVISION										

© Copyright  
 This drawing is the property of G. James  
 Extrusion Co Pty Ltd. It must not be copied or  
 shown to third parties without written consent