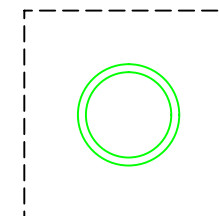
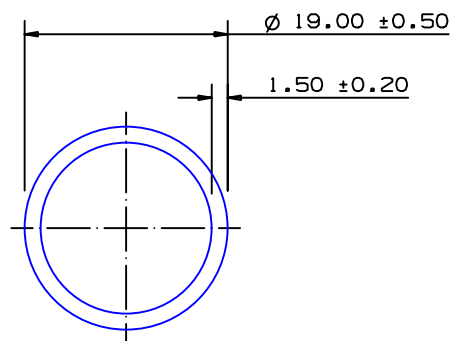


SECTION NO.

950-026

EXPOSED SURFACE  
ACTUAL SIZE

## SECTION DATA:

$I_{xx} = 3\ 180\ \text{mm}^4$   
 $I_{yy} = 3\ 180\ \text{mm}^4$   
 $\text{Theta} = 1.0^\circ$   
 $\text{RadG}_x = 6\ \text{mm}$   
 $\text{RadG}_y = 6\ \text{mm}$   
 $\text{XC}_{\text{Right}} = 9.5\ \text{mm}$   
 $\text{XC}_{\text{Left}} = 9.5\ \text{mm}$   
 $\text{YC}_{\text{top}} = 9.5\ \text{mm}$   
 $\text{YC}_{\text{bot}} = 9.5\ \text{mm}$   
 $\text{Z}_{\text{xx}}^{\text{top}} = 335\ \text{mm}^3$   
 $\text{Z}_{\text{xx}}^{\text{bot}} = 335\ \text{mm}^3$   
 $\text{Z}_{\text{yy}}^{\text{right}} = 335\ \text{mm}^3$   
 $\text{Z}_{\text{yy}}^{\text{left}} = 335\ \text{mm}^3$

0.40 RADIUS ON ALL OUTSIDE CORNERS  
UNLESS OTHERWISE SPECIFIED

EXTRUDED FINISH : ARCHITECTURAL

A

AREA	82.5	SQ MM
WEIGHT	0.223	KG M
PERIMETER	110.0	MM
ANOD PERIM	59.7	MM
PAINT PERIM	100.0 (0.0)	MM
C CIRCLE DIA	19	MM
FACTOR	492	
ALLOY	6060	
TEMPER	T5	


**G. James  
Extrusion Co.**

A.C.N 010 828 234  
 1082 KINGSFORD SMITH DRIVE, EAGLE FARM, QUEENSLAND, 4009  
 PO BOX 1376, EAGLE FARM BC, 4009  
 PHONE : (07) 3877 2833 FAX : (07) 3877 2890

© COPYRIGHT 2004  
 THIS DRAWING IS THE PROPERTY OF  
 G. JAMES EXTRUSION CO. PTY LTD  
 ALL RIGHTS RESERVED

CUSTOMER  
G. JAMES EXTRUSION Co.

CUSTOMER PART NAME NO.  
19.0 x 1.50 ROUND TUBE

SCALE  
2:1

TOLERANCES IN ACCORDANCE WITH AS/NZS 1866:1997  
APPLY UNLESS OTHERWISE SPECIFIED

DRAWN JS0 CHECK DATE 23/02/94 DWG. NO. 950-026

1 13/04/07 SP6 SECTION WAS CAS-080 C/N 7120

NO DATE DR REVISION