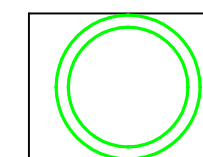
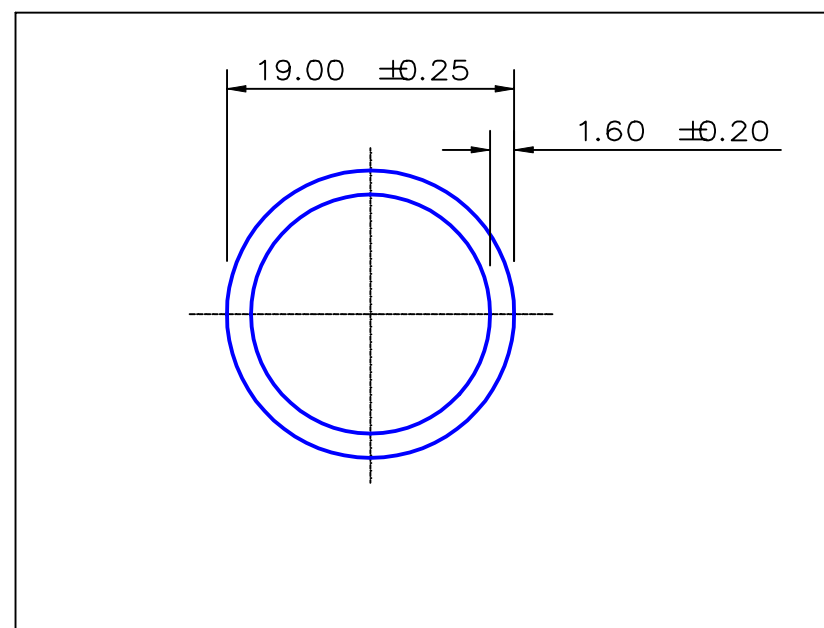


SECTION NO.  
950-025



TOTAL EXPOSED SURFACE  
ACTUAL SIZE

SECTION DATA:  
 $I_{xx} = 3\,338 \text{ mm}^4$   
 $I_{yy} = 3\,338 \text{ mm}^4$   
 $\text{Theta} = 1.0^\circ$   
 $\text{RadG}_x = 6. \text{ mm}$   
 $\text{RadG}_y = 6. \text{ mm}$   
 $X_{\text{Left}} = 9.5 \text{ mm}$   
 $X_{\text{Right}} = 9.5 \text{ mm}$   
 $Y_{\text{Top}} = 9.5 \text{ mm}$   
 $Y_{\text{Bot}} = 9.5 \text{ mm}$   
 $Z_{xx\text{top}} = 351 \text{ mm}^3$   
 $Z_{xx\text{bot}} = 351 \text{ mm}^3$   
 $Z_{yy\text{left}} = 351 \text{ mm}^3$   
 $Z_{yy\text{right}} = 351 \text{ mm}^3$

0.40 RADIUS ON ALL OUTSIDE CORNERS  
UNLESS OTHERWISE SPECIFIED

EXTRUDED FINISH : ARCHITECTURAL

				A		AREA	87.5	SQ MM	 <p>G. James Extrusion Co.</p> <p>A.C.N 010 828 234</p> <p>1082 KINGSFORD SMITH DRIVE, EAGLE FARM, QUEENSLAND, 4009 PO BOX 1376, EAGLE FARM BC, 4009 PHONE : (07) 3877 2833 FAX : (07) 3877 2890</p>	CUSTOMER			G. JAMES EXTRUSION Co.		
						WEIGHT	0.237	KG M		CUSTOMER PART NAME			NO. 19.0 x 1.6 ROUND TUBE		
						PERIMETER	109.3	MM		SCALE		2:1		TOLERANCES IN ACCORDANCE WITH AS 1866-1986 APPLY UNLESS OTHERWISE SPECIFIED	
						ANOD PERIM	59.7	MM		DRAWN	CHECK	DATE	DWG. NO.		
						PAINT PERIM	100.0	MM		JWC		06/04/87	950-025		
						C CIRCLE DIA	19.	MM							
						FACTOR	461.								
						ALLOY	6063								
						TEMPER	T6								
NO	DATE	DR	REVISION												