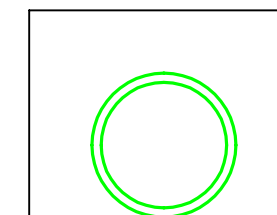
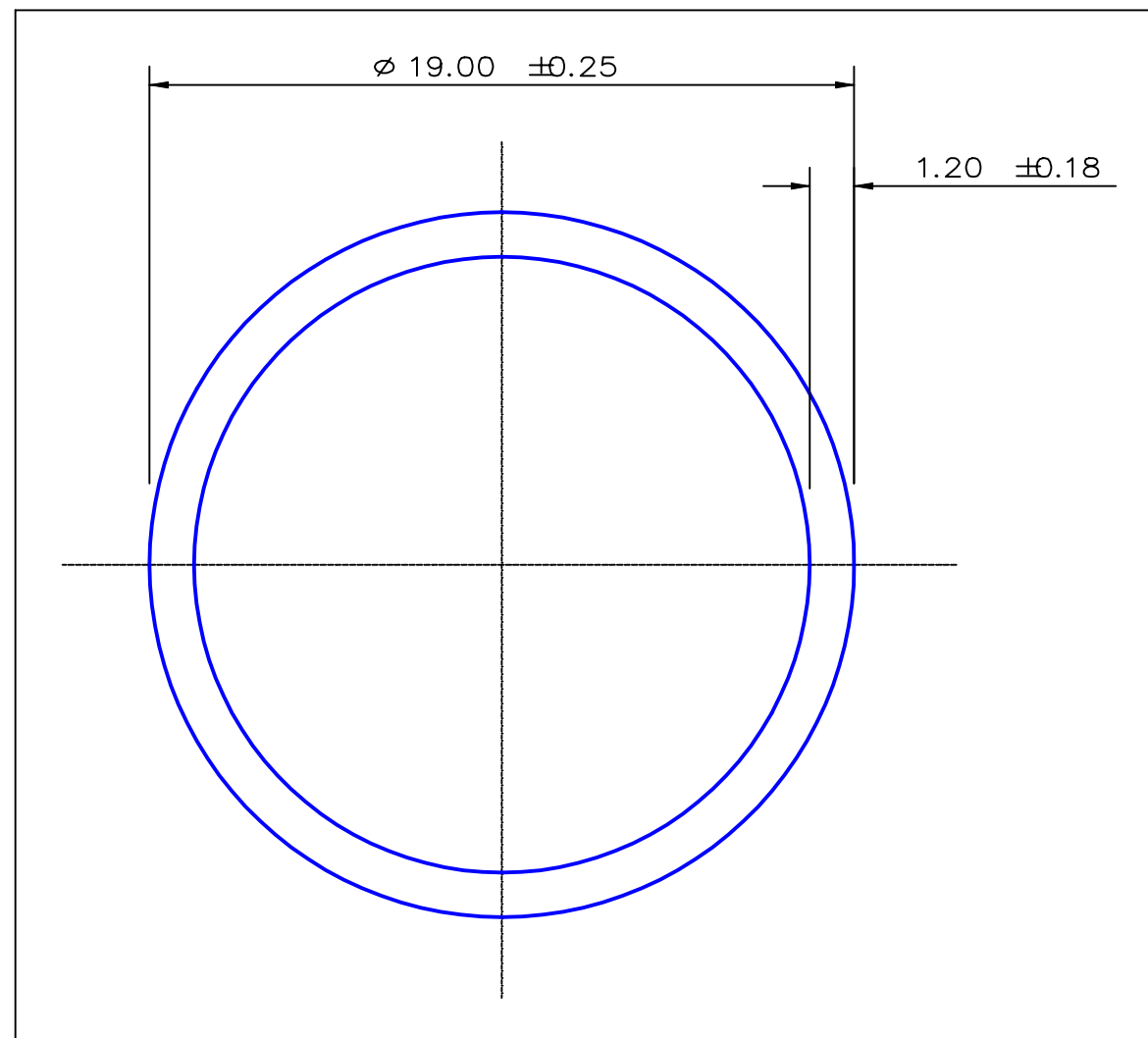


SECTION NO.
950-020



TOTAL EXPOSED SURFACE
ACTUAL SIZE

SECTION DATA:
 $I_{xx} = 2\,670\text{ mm}^4$
 $I_{yy} = 2\,670\text{ mm}^4$
 $\text{Theta} = 0.0$
 $\text{RadG}_x = 6.0\text{ mm}$
 $\text{RadG}_y = 6.0\text{ mm}$
 $X_{\text{Left}} = 9.5\text{ mm}$
 $X_{\text{Right}} = 9.5\text{ mm}$
 $Y_{\text{Top}} = 9.5\text{ mm}$
 $Y_{\text{Bot}} = 9.5\text{ mm}$
 $Z_{xx\text{top}} = 281\text{ mm}^3$
 $Z_{xx\text{bot}} = 281\text{ mm}^3$
 $Z_{yy\text{left}} = 281\text{ mm}^3$
 $Z_{yy\text{right}} = 281\text{ mm}^3$

0.40 RADIUS ON ALL OUTSIDE CORNERS
UNLESS OTHERWISE SPECIFIED

EXTRUDED FINISH : ARCHITECTURAL

				A		AREA	67.1	SQ MM	 G. James Extrusion Co. A.C.N 010 828 234 1082 KINGSFORD SMITH DRIVE, EAGLE FARM, QUEENSLAND, 4009 PO BOX 1376, EAGLE FARM BC, 4009 PHONE : (07) 3877 2833 FAX : (07) 3877 2890	CUSTOMER		G. JAMES EXTRUSION Co.		
						WEIGHT	0.182	KG M		CUSTOMER PART NAME		NO.		
						PERIMETER	111.8	MM		19.0 x 1.2 ROUND TUBE				
						ANOD PERIM	59.7	MM		SCALE		TOLERANCES IN ACCORDANCE WITH AS 1866-1986 APPLY UNLESS OTHERWISE SPECIFIED		
						PAINT PERIM	100.0	MM		5:1				
						C CIRCLE DIA	19.	MM		DRAWN		CHECK	DATE	DWG. NO.
						FACTOR	615.			JWC			30/03/87	950-020
						ALLOY	6063							
						TEMPER	T6							
NO	DATE	DR	REVISION											