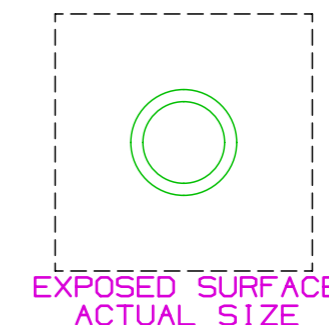
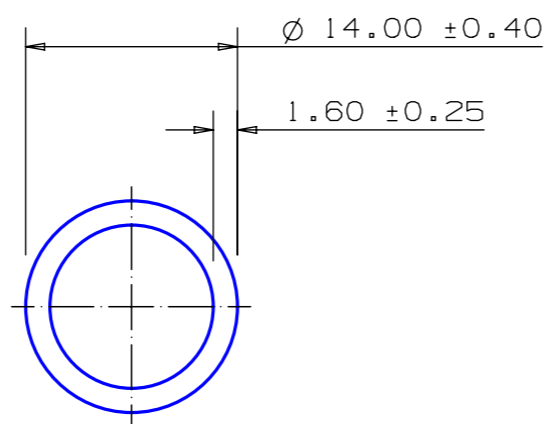


SECTION NO.

950-013



- * FLATNESS 0.30mm / 100mm
- * ANGULARITY 1°
- * STRAIGHTNESS 0.60mm / 300mm
- * TWIST 1.00° / 300mm 7° max

* = 1/2 STANDARD TOLERANCE

MOMENTS OF INERTIA:


- $I_{xx} = 1\ 218\ \text{mm}^4$
- $I_{yy} = 1\ 218\ \text{mm}^4$
- RadG_x = 4 mm
- RadG_y = 4 mm
- XC_{Right} = 7.00 mm
- XC_{Left} = 7.00 mm
- YC_{top} = 7.00 mm
- YC_{bot} = 7.00 mm
- Z_{xx}top = 174 mm³
- Z_{xx}bot = 174 mm³
- Z_{yy}right = 174 mm³
- Z_{yy}left = 174 mm³

0.40 RADIUS ON ALL OUTSIDE CORNERS
UNLESS OTHERWISE SPECIFIED

EXTRUDED FINISH : ARCHITECTURAL

CUSTOMER DRAWING APPROVAL
This drawing has been checked for ALL design requirements and approved.
G.James Extrusion Co. Pty Ltd shall not be responsible for product design,
product use or any infringement of copyright, registered design or patent.

Customer.....
Eng. Design Checked by.....Date.....
Final Approved.....Date.....

NO	DATE	DR	REVISION	AREA	62.3	SQ MM	<p>© Copyright This drawing is the property of G.James Extrusion Co Pty Ltd. It must not be copied or shown to third parties without written consent</p>  <p>When Experience Matters</p> <p>G.James Extrusion Co Pty Ltd ABN 95 010 828 234 P (07) 3877 2833 F (07) 3877 2890 www.gjames.com</p> 	CUSTOMER		G. JAMES EXTRUSION Co.	
				WEIGHT	0.169	KG M		CUSTOMER PART NAME		NO.	
PERIMETER	77.9	MM	14.0 × 1.6 ROUND TUBE								
ANOD PERIM	44.0	MM	SCALE		TOLERANCES IN ACCORDANCE WITH AS/NZS 1866:1997 APPLY UNLESS OTHERWISE SPECIFIED						
PAIN PERIM	100.0	MM	2:1								
POLISH PERIM	0.0	MM	DRAWN		CHECK	DATE					
C CIRCLE DIA	14	MM	A.T.			27/08/87					
FACTOR	461		DATE		DWG. NO.						
ALLOY	6063		27/08/87		950-013						
TEMPER	T6										