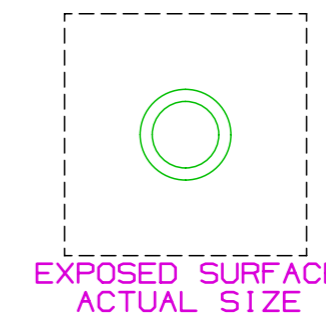
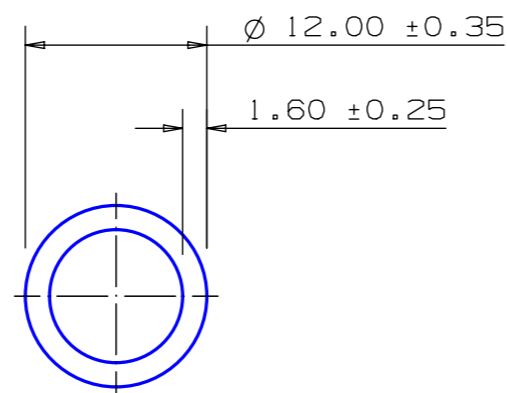


SECTION NO.

950-010



- * FLATNESS 0.30mm / 100mm
- * ANGULARITY 1°
- * STRAIGHTNESS 0.60mm / 300mm
- * TWIST 1.00° / 300mm 7° max

* = 1/2 STANDARD TOLERANCE

MOMENTS OF INERTIA:

- $I_{xx} = 724 \text{ mm}^4$
- $I_{yy} = 724 \text{ mm}^4$
- RadG_x = 4 mm
- RadG_y = 4 mm
- XC_{Right} = 6.00 mm
- XC_{Left} = 6.00 mm
- YC_{top} = 6.00 mm
- YC_{bot} = 6.00 mm
- Z_{xx}top = 121 mm³
- Z_{xx}bot = 121 mm³
- Z_{yy}right = 121 mm³
- Z_{yy}left = 121 mm³

0.40 RADIUS ON ALL OUTSIDE CORNERS
UNLESS OTHERWISE SPECIFIED

EXTRUDED FINISH : ARCHITECTURAL

CUSTOMER DRAWING APPROVAL
This drawing has been checked for ALL design requirements and approved.
G.James Extrusion Co. Pty Ltd shall not be responsible for product design,
product use or any infringement of copyright, registered design or patent.

Customer.....Date.....

Eng. Design Checked by.....Date.....

Final Approved.....Date.....

NO	DATE	DR	REVISION	AREA	52.3	SQ MM	<p>G. James Extrusion Co Pty Ltd P (07) 3877 2833 F (07) 3877 2890 www.gjames.com</p> <p>ABN 95 010 828 234 www.gjames.com</p>	CUSTOMER		G. JAMES EXTRUSION Co.	
				WEIGHT	0.142	KG M		CUSTOMER PART NAME		NO.	
PERIMETER	65.3	MM	12.0 x 1.60 ROUND TUBE								
ANOD PERIM	37.7	MM	SCALE		TOLERANCES IN ACCORDANCE WITH AS/NZS 1866:1997 APPLY UNLESS OTHERWISE SPECIFIED						
PAIN PERIM	100.0	MM	2:1								
POLISH PERIM	0.0	MM	DRAWN		CHECK	DATE		DWG. NO.			
C CIRCLE DIA	12	MM	JWC			30/03/87		950-010			
FACTOR	461										
ALLOY	6063										
TEMPER	T6										

© Copyright
This drawing is the property of G.James
Extrusion Co Pty Ltd. It must not be copied or
shown to third parties without written consent