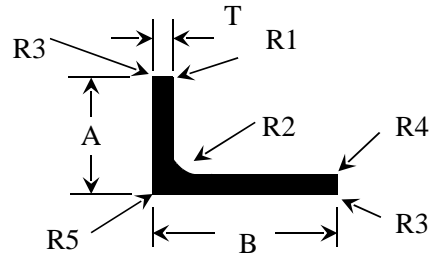


ANGLE – RADIUS CORNER



SECTION NUMBER	DIMENSIONS (mm)								MASS KG/M	X VALUE mm ⁴	Y VALUE mm ⁴	APPL
	A	B	T	R1	R2	R3	R4	R5				
902 510	25.00	100.00	3.00	0.40	3.00	0.40	0.40	0.50	0.996	11,291	379,387	S
902 580	25.00	140.00	2.50	0.40	3.00	0.40	0.40	0.50	1.105	10,076	805,819	A
902 130	28.00	28.00	3.00	0.40	0.40	3.00	0.40	3.00	0.415	10,806	10,806	A
901 154	30.00	50.00	5.00	0.40	4.00	0.40	0.40	0.40	1.026	25,792	94,992	S
902 500	30.00	99.00	4.00	0.40	4.00	0.40	0.40	4.00	1.327	24,734	493,540	A
902 180	38.10	38.10	4.75	0.40	5.30	0.40	0.40	0.40	0.936	45,854	45,854	A
902 200	40.00	40.00	3.00	0.40	1.00	0.40	0.40	2.00	0.624	35,734	35,734	A
ICT 036	40.00	40.00	4.00	0.40	4.00	0.40	0.40	0.40	0.833	46,230	46,230	S
902 205	40.00	40.00	6.00	0.40	4.00	0.40	0.40	0.40	1.213	64,578	64,578	S
902 270	50.00	50.00	4.00	0.40	6.00	0.40	0.40	0.40	1.062	93,183	93,183	S
902 274	50.00	50.00	6.00	0.40	4.00	0.40	0.40	0.40	1.538	131,468	131,468	S
ICT 022	50.00	100.00	4.00	0.40	4.00	0.40	0.40	0.40	1.592	111,832	627,016	S
985 049	50.00	100.00	4.00	0.40	3.00	0.40	0.40	0.40	1.587	109,576	585,078	S
ICT 117	50.00	125.00	6.00	0.40	4.00	0.40	0.40	0.40	2.757	166,909	1,674,155	S
902 280	50.80	50.80	6.35	0.40	6.10	0.40	0.40	0.40	1.661	145,111	145,111	S
902 295	63.50	63.50	6.35	0.40	6.85	0.40	0.40	0.40	2.104	239,751	293,751	S
902 300	65.00	65.00	4.00	0.40	7.50	0.40	0.40	0.40	1.399	210,699	210,699	A
ICT 128	75.00	75.00	3.00	0.40	3.00	0.40	0.40	0.40	1.200	248,960	248,960	S
902 527	75.00	100.00	8.00	0.40	8.00	0.40	0.40	0.40	3.658	657,319	1,355,139	A
902 380	76.20	63.20	6.35	0.40	7.62	0.40	0.40	0.40	2.547	520,107	520,107	S
902 385	76.20	76.20	9.53	0.40	7.00	0.40	0.40	0.40	3.718	734,138	734,138	S
901 555	76.20	101.00	6.35	3.17	3.20	0.40	3.17	0.40	2.934	556,092	1,123,490	S
901 885	76.20	228.00	6.35	3.17	6.00	0.40	3.17	0.40	5.135	669,462	10,436,612	S
902 400	80.00	80.00	6.00	0.40	4.00	0.40	0.40	0.40	2.513	573,897	573,879	A
902 410	80.00	80.00	10.00	0.40	6.00	0.40	0.40	0.40	4.086	891,011	891,011	S
ICT 123	80.00	125.00	8.00	0.40	6.00	0.40	0.40	0.40	4.292	839,609	2,563,701	S
902 530	80.80	101.60	6.35	0.40	8.13	0.40	0.40	0.40	2.552	175,459	1,012,375	S
902 528	100.00	80.00	10.00	0.40	9.00	0.40	0.40	0.40	4.654	1,679,556	954,580	S
901 770	101.00	152.00	6.35	3.17	3.20	0.40	3.17	0.40	4.239	1,383,383	3,801,493	A
902 650	130.00	160.00	10.00	0.40	10.00	0.40	0.40	0.40	8.294	4,950,852	7,594,258	A
ICT 083	150.00	150.00	10.00	0.40	5.00	0.40	0.40	0.40	7.874	6,377,296	6,377,296	A
902 500	30.00	99.00	4.00	0.40	4.00	0.40	0.40	0.40	1.327	24, 734	493, 540	S