

**246 SERIES 5-TRACK SLIDING DOOR (168mm FRAME)  
CONCRETE BLOCK CONSTRUCTION - HARD FIX METHOD**

1 of 2

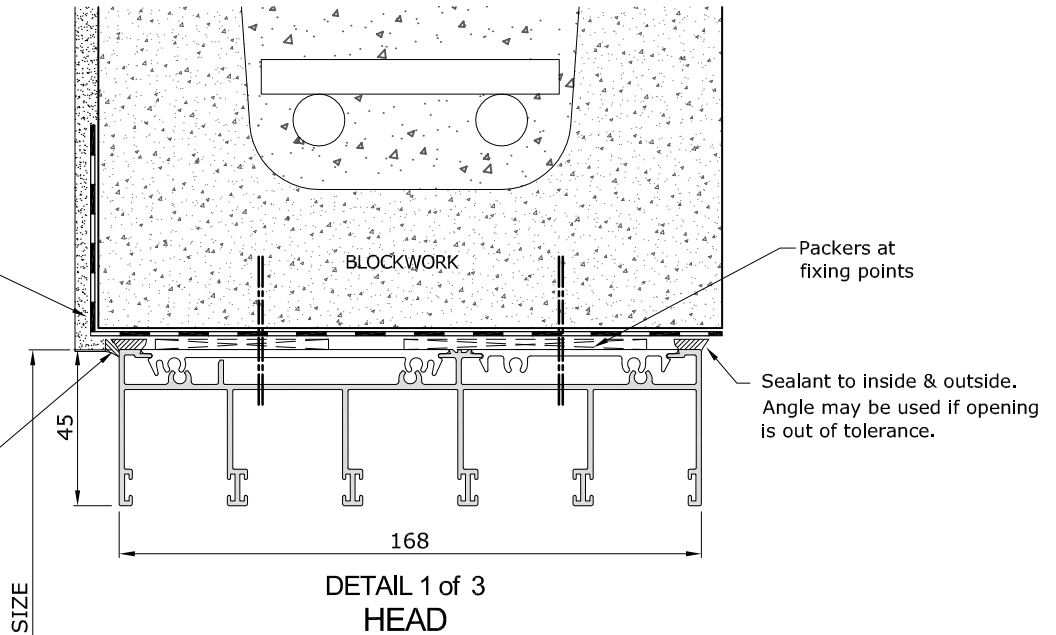
**CRITICAL:**

Waterproof membrane (tanking) applied to opening before fixing door (by others). \* Prior to frame installation.

\* IN ACCORDANCE WITH AS:4773-1-2015

Break between render and window. to be filled with sealant for thermal expansion (by builder / others). \*

\* IN ACCORDANCE WITH AS:2047-2014



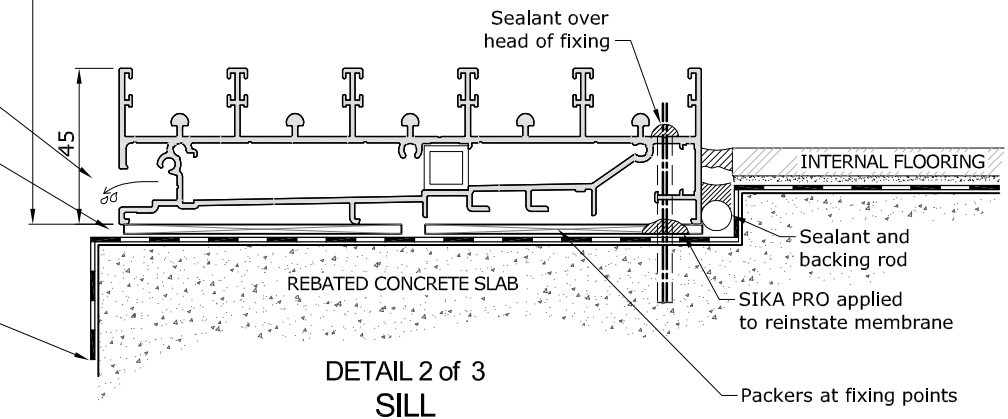
**CRITICAL:**

-Outside of sill must not be sealed or blocked by external finishes.  
-Area under the sill must be allowed to freely drain + pressure equalise

**CRITICAL:**

Waterproof membrane (tanking) applied to opening (by others). \* Prior to frame installation.

\* IN ACCORDANCE WITH AS:4654-2-2012



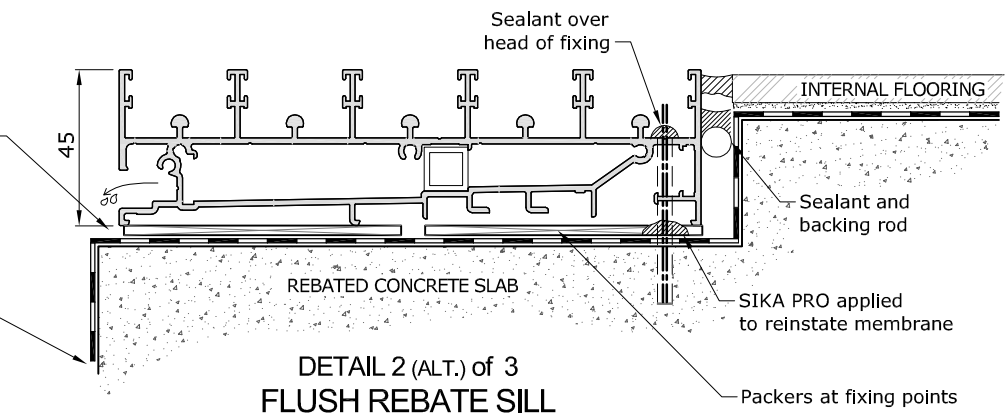
**CRITICAL:**

Outside of sill must not be sealed or blocked by external finishes.  
Area under the sill must be allowed to freely drain + pressure equalise

**CRITICAL:**

Waterproof membrane (tanking) applied to opening (by others). \* Prior to frame installation.

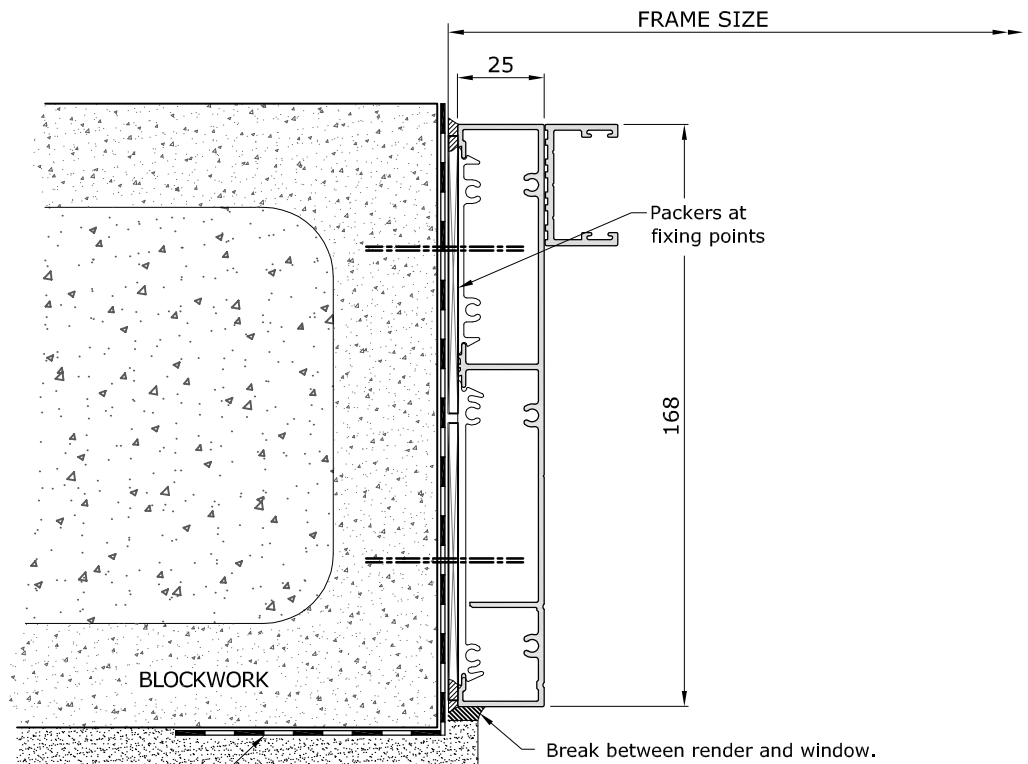
\* IN ACCORDANCE WITH AS:4654-2-2012



- ▷ G.James considers the area under a sill to be a wet area, therefore the concrete must be waterproofed with a suitable tanking membrane. The front of this area is to be left open for drainage and pressure equalisation.
- ▷ Fixings shown are for illustration purposes only. All fixings to be assessed by a G.James Engineer to suit the design criteria of the project.
- ▷ Sill must be level side-to-side, front-to-back, and supported at fixing points.

**246 SERIES 5-TRACK SLIDING DOOR (168mm FRAME)  
CONCRETE BLOCK CONSTRUCTION - HARD FIX METHOD**

2 of 2



**CRITICAL:**

Waterproof membrane (tanking)  
applied to opening (by others) \*  
Prior to frame installation.

\* In accordance with  
AS:4773-1-2012

DETAIL 3 of 3  
JAMB

Break between render and window.  
to be filled with sealant for thermal expansion  
(by builder / others). \*

\* IN ACCORDANCE WITH  
AS:2047-2014

- ▷ G.James considers the area under a sill to be a wet area, therefore the concrete must be waterproofed with a suitable tanking membrane. The front of this area is to be left open for drainage and pressure equalisation.
- ▷ Fixings shown are for illustration purposes only. All fixings to be assessed by a G.James Engineer to suit the design criteria of the project.