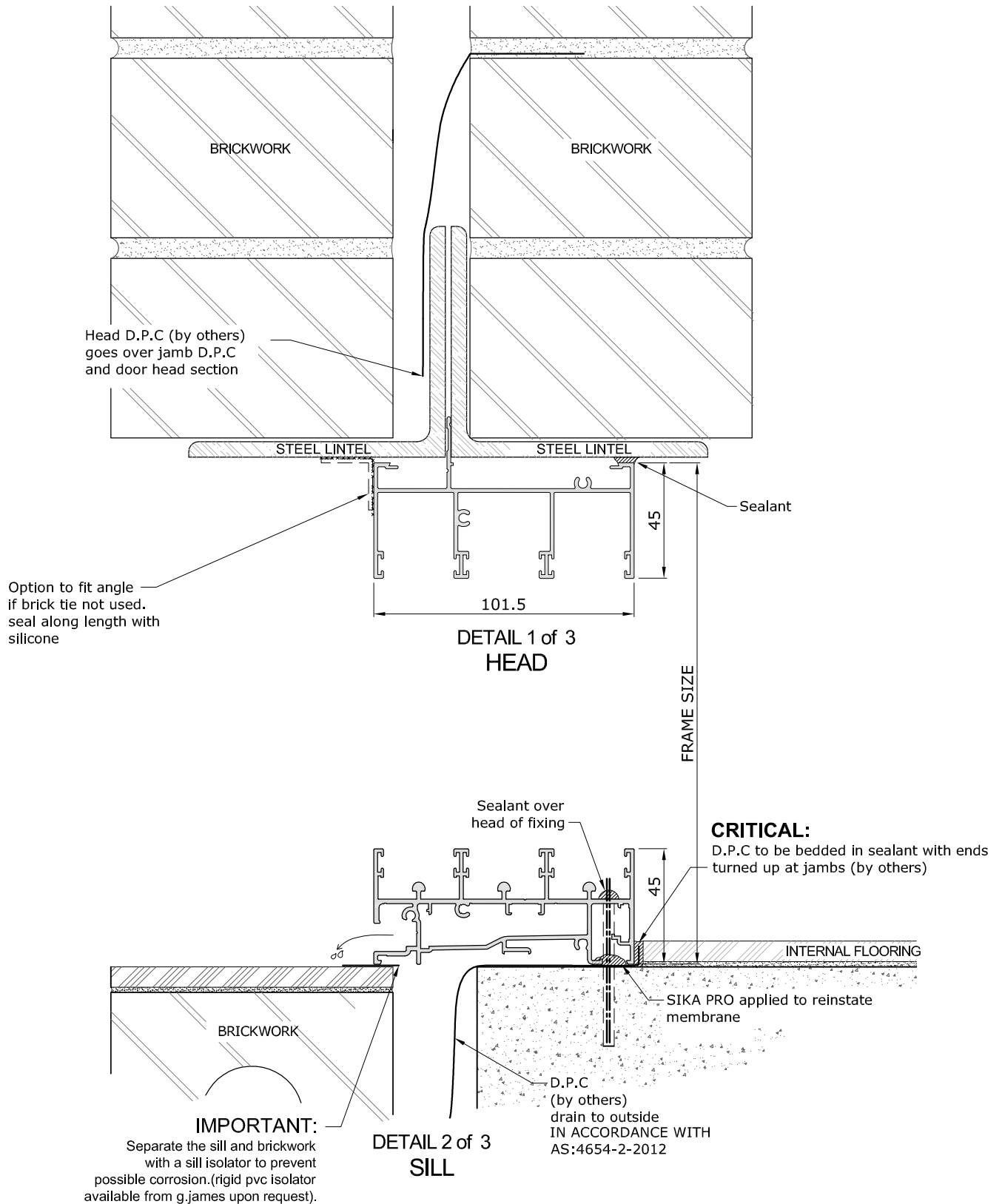


**246 SERIES 3-TRACK SLIDING DOOR (101mm FRAME)
CAVITY BRICK CONSTRUCTION**

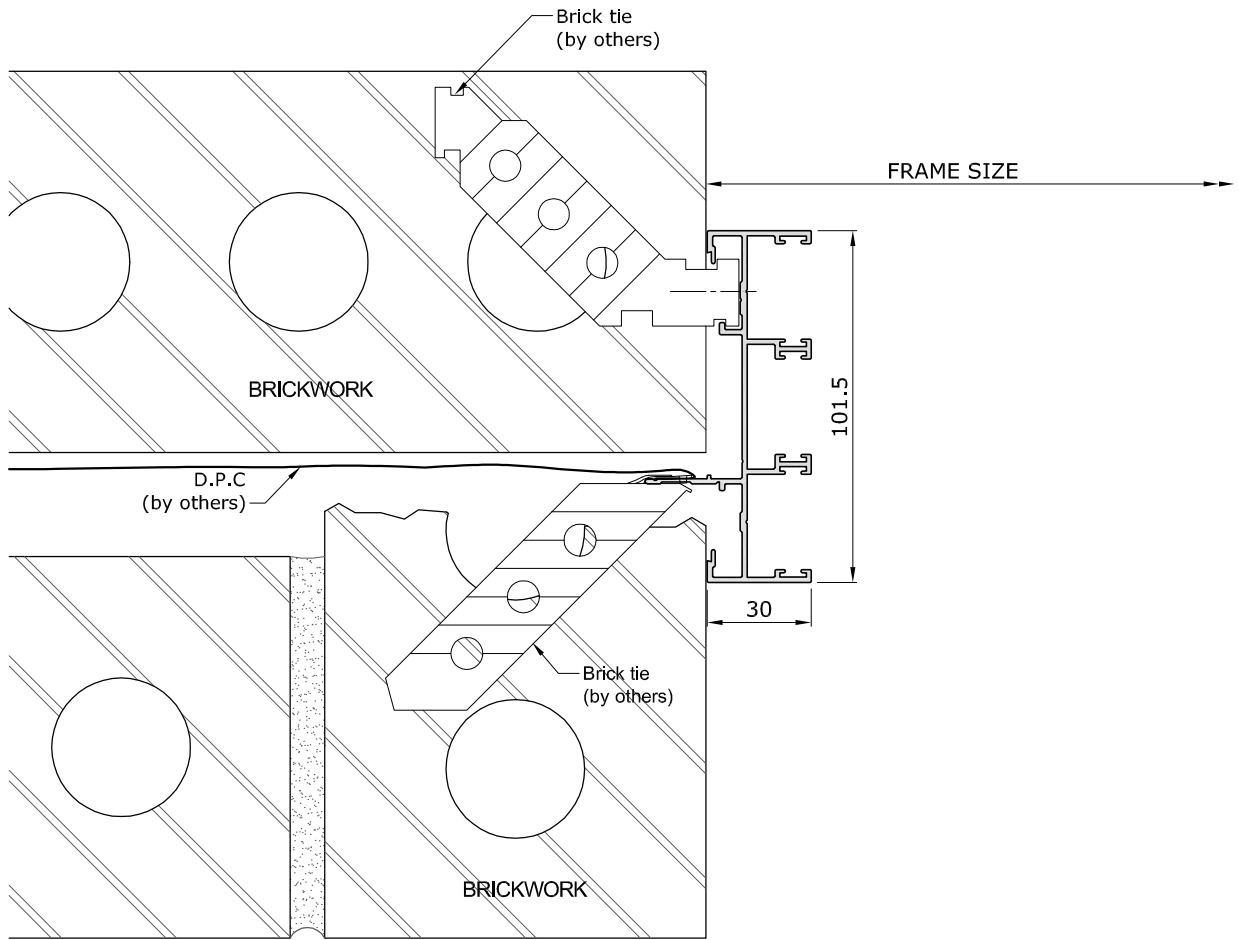
1 of 2



- ▷ Fixings shown are for illustration purposes only. All fixings to be assessed by a G.James Engineer to suit the design criteria of the project.
- ▷ Sill must be level side-to-side, front-to-back, and supported at fixing points.

**246 SERIES 3-TRACK SLIDING DOOR (101mm FRAME)
CAVITY BRICK CONSTRUCTION**

2 of 2



**DETAIL 3 of 3
JAMB**

▷ Fixings shown are for illustration purposes only. All fixings to be assessed by a G.James Engineer to suit the design criteria of the project.